

SECTION F CONTENTS

UNION END VALVES

DESCRIPTION	PAGE
70-300 Series, Threaded Bronze, Single Union End	F-1
70-400 Series, Solder Bronze, Single Union End	F-2
73-300 Series, Threaded Carbon Steel, Double Union End (UL Listed)	F-3
73-400 Series, Socket Weld Carbon Steel, Double Union End (UL Listed)	F-4
76-300 Series, Threaded Stainless Steel, Double Union End	F-5
76-400 Series, Socket Weld Stainless Steel, Double Union End	F-6

<u>MATERIALS OR STYLE</u>		<u>TYPE</u>	<u>VARIATIONS</u>	<u>SIZE</u>
70	Bronze	1 NPT Female/150 Flange	1 One Size Larger	1 1/4"
71	Bronze with pads	2 Solder & Soc. Weld/150 Flange Full Port	2 Male Retainer	2 3/8"
72	Carbon Steel, High Pressure	3 Union End NPT/Reg.Port Soc.Weld	3 Adjustable Stop Lever	3 1/2"
73	Carbon Steel	4 Union End Solder/Reg.Port Soc.Weld	4 Cu-Ni Ball & Stem	4 3/4"
73A	A105 Carbon Steel	5 Spring Return/High Pressure Full Port NPT	5 SS Sall & Stem	5 1"
74	Nickel	6 3-way, NPT/High Pressure Soc.Weld Full Port	6 Original Balancing Stop- Attach to Lever or T-Handle	6 1 1/4"
75	Pad-Locking Bronze	7 Butt Weld/300 Flange	7 One Size Smaller Female Retainer	7 1 1/2"
76	CF8M Stainless Steel	8 Male x Female, NPT/600 Flange	8 (Not Assigned)	8 2"
76F	CF8M Stainless Steel, Full Port	9 3-way Solder/O-Ring Boss/300 Flange Full Port	9 Pinned Retainer	9 2 1/2"
77	Bronze Full Port			0 3"
77C	Bronze Full Port Economy			A 4"
78	Special Valves			C 6"
79	Refrigerant Valves			E 8"
7A	Chlorine Carbon Steel			G 10"
7K	Bronze Full Port Drain			H 12"
80	Bronze, UL Listed			
81	Bronze UL Listed Plain Ball			
82	Bronze 3-Piece Full Port			
83	CS 3-Piece			
83R	CS 3-Piece, Actuator Ready			
85	SS 3-Piece, Reg.Port			
85R	SS 3-Piece, Reg.Port, Actuator Ready			
86	SS 3-Piece, Full Port			
86R	SS 3-Piece, FullPort, Actuator Ready			
87	CF8M SS Flanged			
87A	CF8M SS Flanged			
87A-400	Alloy-20 Flanged			
88	Carbon Steel Flanged			
88A	Carbon Steel Flanged			
89	Cast Carbon Steel w/Pads			
9A	Bronze, Hvy.Patt. Unibody			
90	Bronze, Unibody, UL Listed			
91	Bronze, Unibody			
92	Cast Carbon Steel Unibody			
93	CS Unibody			
95	Bronze Stop & Drain			
96	CF8M SS Unibody			
399	Alloy-20 NPT			
401	Alloy-20, 3-Piece, Full Port			

DESIGN

-01	Standard	-46	SS Latch Lock Lever, Lock in Closed Position Only
-02	Stem Grounded	-47	SS Oval Latch Lock Handle, SS Nut
-03	1-1/4" Carbon Steel Ext.Stem	-48	SS Oval Handle, No Latch, SS Nut
-04	2-1/4" Carbon Steel Ext.Stem	-49	Assembled Dry
-05	Plain Ball	-50	2-1/4" CS Locking Stem Extension
-06	2000 lb. 73-100 Series (1-1/4" to 2")	-51	One Tack Weld (I-7362-05-1X)
-07	Steel Tee Handle	-52	Two Tack Weld (I-7362-05-2X)
-08	90 degree reversed stem	-53	Three Tack Weld (I-7362-05-3X)
-09	SS Lever	-54	Four Tack Weld (I-7362-05-4X)
-10	SS Lever & Nut	-56	MultiFill Seats and Packing
-12	Stamp "157 SWP" & Bagged	-57	Oxygen Cleaned (Bronze and SS Only)
-13	Stamp "157 SWP"	-58	Chain Lever, Horizontal
-14	Side Vented Ball (uni-directional)	-59	SS External Trim - 3-pc Valves
-15	Wheel Handle, Steel	-60	Grounded Ball & Stem
-16	Chain Lever, Vertical	-61	Grounded Ball & Stem, Assembled Dry
-17	Rough Chrome Plate - Bronze Valves	-62	Body Centre Section
-21	UHMWPE Trim (non-PTFE)	-63	NPT x Solder/Socket Weld
-22	Viton Union Seals	-64	250 lb. Steam Trim
-23	Tank Flange (2" 3-pc valves only)	-65	MultiFill Seats & Graphite Packing
-24	Graphite Packing	-66	FNPT x Butt Weld
-25	Graphite Packing, Vented Ball & Tack Welded Ret.	-68	4" Stem Extension (3" & 4" 3-pc. 82 Series
-26	Chevron Pkg Vent Assd.Dry Monel Trim (7A)	-69	Purge Ports Drilled/Tapped @ Bottom & approx. 45" from Top
-27	SS Latch Lock Lever & Nut	-70	4" Extended Bonnet
-28	Actuator Mounting Pad Not Drilled/Tapped	-72	RTFE Packing
-29	Graphite Packing & Seals	-73	TFE Packing - Spiral Wound Body Seals - TFE Fillers - Flange BV
-30	Cam-Lock and Grounded Stem	-74	Graphite Packing - Spiral Wound Body Seals - Graphoil Fillers - Flange BV
-31	7B Series w/Boss not Drilled/Tapped	-75	MPTFE Seats, PTFE Packing, RPTFE Gaskets
-32	SS Hi-Rise Tee Handle & Nut	-76	Live Loaded 87A/88A Series (Lever)
-33	76-300 Series w/Pad Drilled/Tapped	-77	Live Loaded 87A/88A Series (Gear & Actuated)
-34	Nylatron Seats (96 Series)	-78	Delrin Seats
-35	VTFE Trim	-79	Nylon Seats/Graphite Packing 72 Series
-36	SS HiRise Round Handle, SS Nut	-80	Multi-Seal (Super TFE) 87A/88A Series
-38	Peek Seats & Bearing (Graphite packing & seals)	-97	Grnd.Whl.Handle, Pinned or Tack Welded
-39	SS Hi-Rise Locking Wheel Handle, SS Nut	-98	Grnd.Whl. Pinned or Tack Welded & 1-1/4" Stem Ext.
-40	Cyl-loc and Grounded Stem	-SW	Limit Switch Mounted
-41	Auto.Drain (Bronze Valves Only)	-MG	Gear Operated, Std. Hand Wheel
-42	Non-Vented Ball, No Holes in Slot (CS and SS)	-MH	Gear Operated, Std. Hand Wheel, Lockout Device
-43	Cyl-Loc, Grnd B&S, 680 LocTite or 2-Tack Welds	-MJ	Gear Operated, Oversize Hand Wheel
-44	Seal Weld 76-100 & 89-100	-MK	Gear Operated, Oversize Hand Wheel, Lockout Device
-45	Less Lever & Nut	-P01	BSPP (Parallel) Thread Connection
		-BC	Ball Check
		T01	BSPT (Tapered) Thread Connection

Apollo® 70-300 Series

Single Union End Bronze Ball Valve

Threaded, Single Union End, 600 psig WOG, Cold Non-Shock.
 150 psig Saturated Steam, Vacuum Service to 29 inches Hg.
 Federal Specification: WW-V-35C, Type: II, Composition: BZ, Style: 3.

FEATURES

- Chromium plated ball
- RPTFE seats and stuffing box ring
- Fluorocarbon O-Ring sealed single union requires only light torque to seal
- Blow-out-proof stem design
- Adjustable packing gland

STANDARD MATERIAL LIST

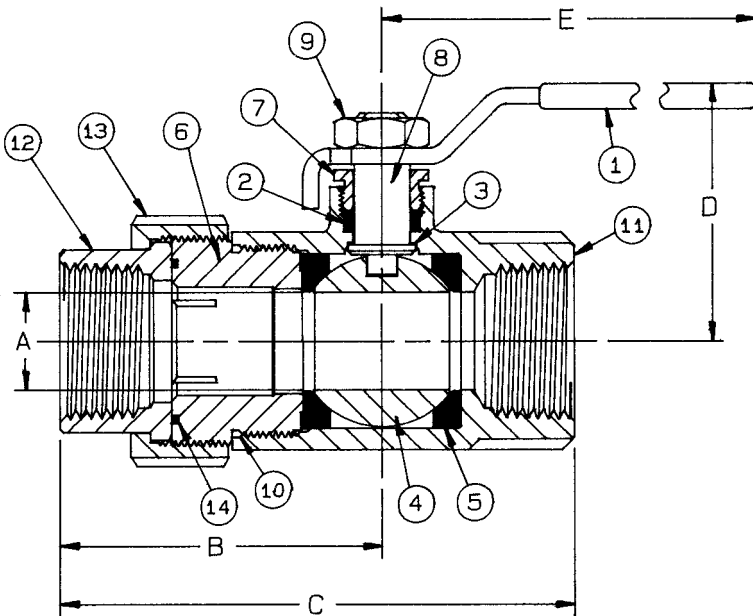
1. Lever and grip	Steel, zinc plated w/vinyl	8. Stem	B16
2. Stem packing	RPTFE	9. Lever nut	Steel, zinc plated
3. Stem bearing	RPTFE	10. Body seal (1-1/4" to 2")	PTFE
4. Ball	B16, chrome plated	11. Body	B584-C84400
5. Seat (2)	RPTFE	12. Tailpiece	B16 or B584-C84400
6. Retainer	B16 (1/4" to 1-1/2") B584-C84400 (2")	13. Union nut	B16 or B584-C84400
7. Gland nut	B16	14. Union seal	Fluorocarbon

VARIATIONS AVAILABLE:

- 70-320 Series (Adjustable Stop Lever)
- 70-340 Series (316 SS Ball & Stem)
- 70-350 Series (Balancing Stop)

OPTIONS AVAILABLE:

(SUFFIX)	OPTION	SIZES
-02-	Static Grounded	1/4" to 2"
-03-	1-1/4" Stem Extension	1/4" to 2"
-04-	2-1/4" Stem Extension	1/4" to 2"
-05-	Plain Ball	1/4" to 2"
-07-	Tee Handle	1/4" to 2"
-08-	90° Reversed Stem	1/4" to 2"
-10-	SS Lever & Nut	1/4" to 2"
-14-	Vented Ball (see page J-2)	1/4" to 2"
-15-	Round Handle	1/4" to 2"
-16-	Vertical Chain Lever	3/4" to 2"
-17-	Rough Chrome Plating	1/4" to 2"
-18-	Plain Yellow Grip	1/4" to 2"
-20-	Slot Vented Ball	1/4" to 2"
-21-	UHMWPE Seats (Non-PTFE)	1/4" to 2"
-24-	Graphite Stem Packing	1/4" to 2"
-27-	Latch Lock Lever	1/4" to 2"
-30-	CamLock Handle	1/4" to 2"
-32-	SS Tee Handle & Nut	1/4" to 2"
-35-	PTFE Trim	1/4" to 2"
-45-	Less Lever & Nut	1/4" to 2"
-46-	Latch Lock Lever - Lock Close Only	1/4" to 2"
-48-	SS Oval Handle	1/4" to 2"
-49-	Assembled Dry	1/4" to 2"
-50-	2-1/4" Locking Stem Extension	1/4" to 2"
-56-	Multifill Seats	1/4" to 2"
-57-	Cleaned for Gaseous Oxygen	1/4" to 2"
-58-	Horizontal Chain Lever	3/4" to 2"
-60-	Static Grounded Ball & Stem	1/4" to 2"
-63-	Threaded x Solder Tailpiece	3/8" to 2"



BRONZE UNION END
BALL VALVE

NUMBER	SIZE	A	B	C	D	E	Wt.
70-301-01	1/4"	.37	1.90	2.93	1.75	3.87	.86
70-302-01	3/8"	.37	1.90	2.93	1.75	3.87	.84
70-303-01	1/2"	.50	2.00	3.09	1.75	3.87	.99
70-304-01	3/4"	.68	2.46	3.96	2.12	4.87	1.91
70-305-01	1"	.87	2.78	4.46	2.25	4.87	2.42
70-306-01	1-1/4"	1.00	2.68	4.68	2.62	5.50	4.27
70-307-01	1-1/2"	1.25	2.87	5.06	3.05	8.00	5.82
70-308-01	2"	1.50	3.25	5.59	3.24	8.00	8.55

**For Pressure/Temperature Ratings,
Refer to Page N-10, Graph No. 4**

Apollo® 70-400 Series

Single Union End Solder Bronze Ball Valve

Solder Ends, Single Union End, 600 psig WOG, Cold Non-Shock.
 150 psig Saturated Steam, Vacuum Service to 29 inches Hg.
 Federal Specification: WW-V-35C, Type: II, Composition: BZ, Style: 3.

FEATURES

- Chromium plated ball
- RPTFE seats and stuffing box ring
- Fluorocarbon O-Ring sealed single union requires only light torque to seal
- Blow-out-proof stem design
- Adjustable packing gland

STANDARD MATERIAL LIST

1. Lever and grip	Steel, zinc plated w/vinyl	8. Stem	B16
2. Stem packing	RPTFE	9. Lever nut	Steel, zinc plated
3. Stem bearing	RPTFE	10. Body seal (1-1/4" to 2")	PTFE
4. Ball	B16, chrome plated	11. Body	B584-C84400
5. Seat (2)	RPTFE	12. Tailpiece	B16 or B584-C84400
6. Retainer	B16 or B584-C84400	13. Union nut	B16 or B584-C84400
7. Gland nut	B16	14. Union seal	Fluorocarbon

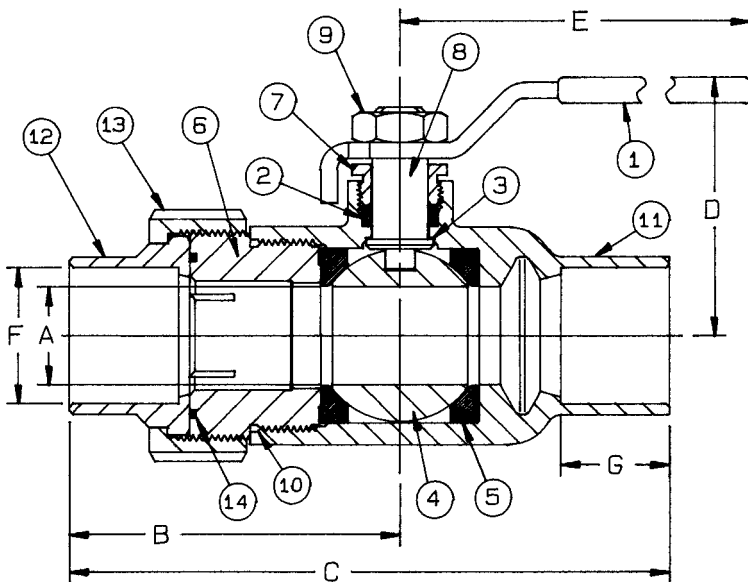
VARIATIONS AVAILABLE:

- 70-420 Series (Adjustable Stop Lever)
- 70-440 Series (316 SS Ball & Stem)
- 70-450 Series (Balancing Stop)

The 70-400 is designed to be soft soldered into lines without disassembly. This allows a tested valve to be installed without disturbing the seats and seals in any way. Soldering temperature not to exceed 500°F.

OPTIONS AVAILABLE:

(SUFFIX)	OPTION	SIZES
-02-	Static Grounded	3/8" to 2"
-03-	1-1/4" Stem Extension	3/8" to 2"
-04-	2-1/4" Stem Extension	3/8" to 2"
-05-	Plain Ball	3/8" to 2"
-07-	Tee Handle	3/8" to 2"
-08-	90° Reversed Stem	3/8" to 2"
-10-	SS Lever & Nut	3/8" to 2"
-14-	Vented Ball(see page J-2)	3/8" to 2"
-15-	Round Handle	3/8" to 2"
-16-	Vertical Chain Lever	3/4" to 2"
-17-	Rough Chrome Plating	3/8" to 2"
-18-	Plain Yellow Grip	3/8" to 2"
-20-	Slot Vented Ball	3/8" to 2"
-21-	UHMWPE Seats (Non-PTFE)	3/8" to 2"
-24-	Graphite Stem Packing	3/8" to 2"
-27-	Latch Lock Lever	3/8" to 2"
-30-	CamLock Handle	3/8" to 2"
-32-	SS Tee Handle & Nut	3/8" to 2"
-35-	PTFE Trim	3/8" to 2"
-45-	Less Lever & Nut	3/8" to 2"
-46-	Latch Lock Lever - Lock Close Only	3/8" to 2"
-48-	SS Oval Handle	3/8" to 2"
-49-	Assembled Dry	3/8" to 2"
-50-	2-1/4" Locking Stem Extension	3/8" to 2"
-56-	Multifill Seats	3/8" to 2"
-57-	Cleaned for Gaseous Oxygen	3/8" to 2"
-58-	Horizontal Chain Lever	3/4" to 2"
-60-	Static Grounded Ball & Stem	3/8" to 2"
-63-	Threaded x Solder Tailpiece	3/8" to 2"



SINGLE UNION END
 SOLDER BRONZE BALL VALVE

NUMBER	SIZE	A	B	C	D	E	F	G	Wt.
70-402-01	3/8"	.37	1.81	3.09	1.75	3.87	.503	.37	.85
70-403-01	1/2"	.50	2.00	3.43	1.75	3.87	.628	.50	1.02
70-404-01	3/4"	.68	2.62	4.56	2.06	4.78	.878	.75	1.93
70-405-01	1"	.87	2.81	5.06	2.25	4.78	1.129	.90	2.42
70-406-01	1-1/4"	1.00	2.87	5.18	2.62	5.50	1.378	.96	4.11
70-407-01	1-1/2"	1.25	2.92	5.53	3.10	8.00	1.629	1.09	5.44
70-408-01	2"	1.50	3.50	6.75	3.24	8.00	2.129	1.34	7.77

**For Pressure/Temperature Ratings,
 Refer to Page N-10, Graph No. 4**

Apollo® 73-300 Series

Carbon Steel Double Union End Ball Valve

Threaded, 3000 psig WOG, Cold Non-Shock, 150 psig Saturated Steam.

Vacuum Service to 29 inches Hg.

Federal Specification: WW-V-35C, Type II, Composition: CS, Style: 1

FEATURES

- Heavy duty quarter turn lever
- RPTFE seats and seals
- Steel barstock design
- Easy installation and maintenance
- Blow-out-proof stem design
- Adjustable packing gland
- Chromium plated ball
- Nitride corrosion protection

UL LISTINGS @ 250 PSIG MAX



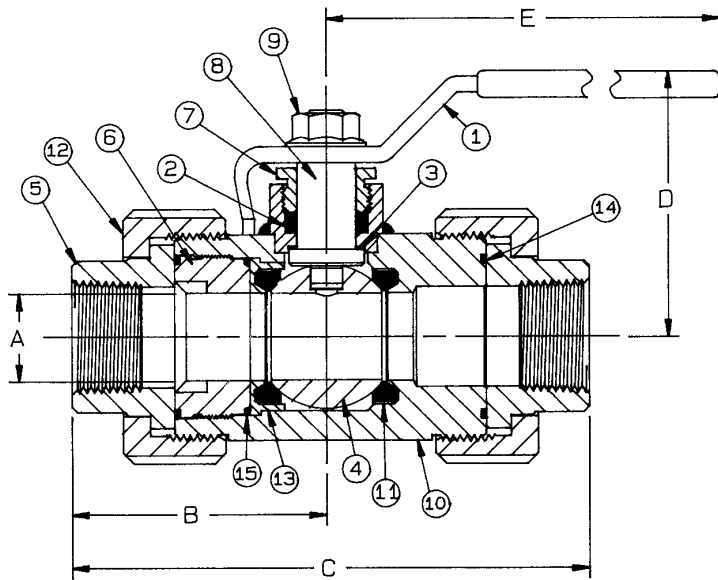
LISTED

- Guide YRPV: Gas shutoff valve for use with natural and manufactured gases.
- Guide YSDT: LP gas shutoff valve.
- Guide YRBX: Flammable liquid shutoff valve.

Note: Listings apply ONLY to the standard -01 valves.

STANDARD MATERIAL LIST

1. Lever and grip	Steel, zinc plated w/vinyl	9. Lever nut	Steel, zinc plated
2. Stem packing	RPTFE	10. Body	A108-CS
3. Stem bearing	RPTFE	11. Seat (2)	RPTFE
4. Ball	A108-CS chrome plated	12. Union nut (2)	A108-CS
5. Tailpiece (2)	A108-CS	13. Seat holder	A108-CS
6. Retainer	A108-CS	14. Union seal (2)	RPTFE
7. Gland nut	A108-CS	15. Retainer seal	RPTFE
8. Stem	A108-CS chrome plated		



VARIATIONS AVAILABLE:

73-340 Series (316 SS Ball & Stem)

OPTIONS AVAILABLE:

(SUFFIX)	OPTION	SIZES
-02-	Static Grounded	1/4" to 2"
-07-	Tee Handle	1/4" to 1-1/2"
-08-	90° Reversed Stem	1/4" to 2"
-10-	SS Lever & Nut	1/4" to 2"
-14-	Vented Ball(see page J-2)	1/4" to 2"
-15-	Round Handle	1/4" to 1"
-18-	Plain Yellow Grip	1/4" to 2"
-19-	Lock Plate	1/4" to 2"
-22-	Fluorocarbon Union Seals	1/4" to 2"
-29-	Firesafe	1/4" to 2"
-45-	Less Lever & Nut	1/4" to 2"
-60-	Static Grounded Ball & Stem	1/4" to 2"
-63-	Threaded x Socket Weld	1/2" to 2"
-64-	250 Lb. Steam Trim	1/4" to 2"
-P01-	BSPP (Parallel) Thread Connection	1/4" to 2"
-T01-	BSPT (Tapered) Thread Connection	1/4" to 2"

CARBON STEEL DOUBLE UNION END BALL VALVE

NUMBER	SIZE	A	B	C	D	E	Wt.
73-301-01	1/4"	.43	2.50	5.00	2.50	5.62	3.51
73-302-01	3/8"	.57	2.50	5.00	2.50	5.62	3.45
73-303-01	1/2"	.62	2.50	5.00	2.50	5.62	3.35
73-304-01	3/4"	.81	2.71	5.31	2.62	5.62	4.48
73-305-01	1"	1.00	2.96	6.06	3.12	6.62	7.04
73-306-01	1-1/4"	1.25	2.87	6.12	3.43	8.00	9.96
73-307-01	1-1/2"	1.50	3.46	7.12	3.56	8.00	14.83
73-308-01	2"	1.75	3.75	7.50	4.18	9.00	20.50

**For Pressure/Temperature Ratings,
Refer to Page N-16, Graph No. 15**

Apollo® 73-400 Series

Carbon Steel Double Union End Socket Weld Ball Valve

Socket Weld End, 3000 psig WOG, Cold Non-Shock, 150 psig Saturated Steam.

Vacuum Service to 29 inches Hg.

Federal Specification: WW-V-35C, Type II, Composition: CS, Style: 1

FEATURES

- Heavy duty quarter turn lever
- RPTFE seats and seals
- Steel barstock design
- Easy installation and maintenance
- Blow-out-proof stem design
- Adjustable packing gland
- Chromium plated ball
- Nitride corrosion protection

UL LISTINGS @ 250 PSIG MAX



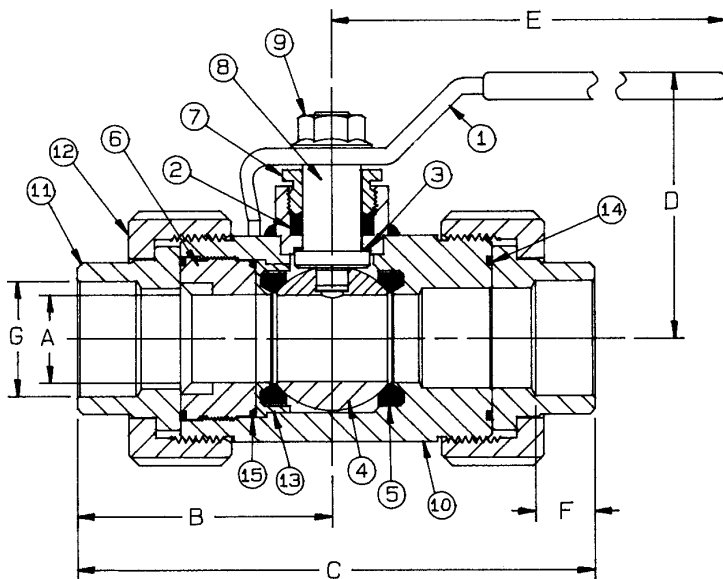
LISTED

- Guide YRPV: Gas shutoff valve for use with natural and manufactured gases.
- Guide YSDT: LP gas shutoff valve.
- Guide YRBX: Flammable liquid shutoff valve.

Note: Listings apply ONLY to the standard -01 valves.

STANDARD MATERIAL LIST

1. Lever and grip	Steel, zinc plated w/vinyl	9. Lever nut	Steel, zinc plated
2. Stem packing	RPTFE	10. Body	A108-CS
3. Stem bearing	RPTFE	11. Tail piece (2)	A108-1018
4. Ball	A108-CS chrome plated	12. Union nut (2)	A108-CS
5. Seat (2)	RPTFE	13. Seat holder	A108-CS
6. Retainer	A108-CS	14. Union seal (2)	RPTFE
7. Gland nut	A108-CS	15. Retainer seal	RPTFE
8. Stem	A108-CS chrome plated		



VARIATIONS AVAILABLE:

73-440 Series (316 SS Ball & Stem)

OPTIONS AVAILABLE:

(SUFFIX)	OPTION	SIZES
-02-	Static Grounded	1/2" to 2"
-07-	Tee Handle	1/2" to 1-1/2"
-08-	90° Reversed Stem	1/2" to 2"
-10-	SS Lever & Nut	1/2" to 2"
-14-	Vented Ball(see page J-2)	1/2" to 2"
-15-	Round Handle	1/2" to 1"
-18-	Plain Yellow Grip	1/2" to 2"
-19-	Lock Plate	1/2" to 2"
-22-	Fluorocarbon Union Seals	1/2" to 2"
-29-	Firesafe	1/2" to 2"
-45-	Less Lever & Nut	1/2" to 2"
-60-	Static Grounded Ball & Stem	1/2" to 2"
-64-	250 Lb. Steam Trim	1/2" to 2"

CARBON STEEL DOUBLE UNION END SOCKET WELD BALL VALVE

NUMBER	SIZE	A	B	C	D	E	F	G	Wt.
73-403-01	1/2"	.62	2.50	5.00	2.50	5.62	.43	.855	3.35
73-404-01	3/4"	.81	2.71	5.31	2.62	5.62	.56	1.065	4.48
73-405-01	1"	1.00	2.93	6.06	3.12	6.62	.68	1.330	7.04
73-406-01	1-1/4"	1.25	2.87	6.12	3.43	8.00	.81	1.675	9.96
73-407-01	1-1/2"	1.50	3.46	7.12	3.56	8.00	.81	1.915	14.83
73-408-01	2"	1.75	3.75	7.50	4.18	9.00	1.06	2.406	20.50

**For Pressure/Temperature Ratings,
Refer to Page N-16, Graph No. 15**

Apollo® 76-300 Series

Double Union End Stainless Steel Ball Valve

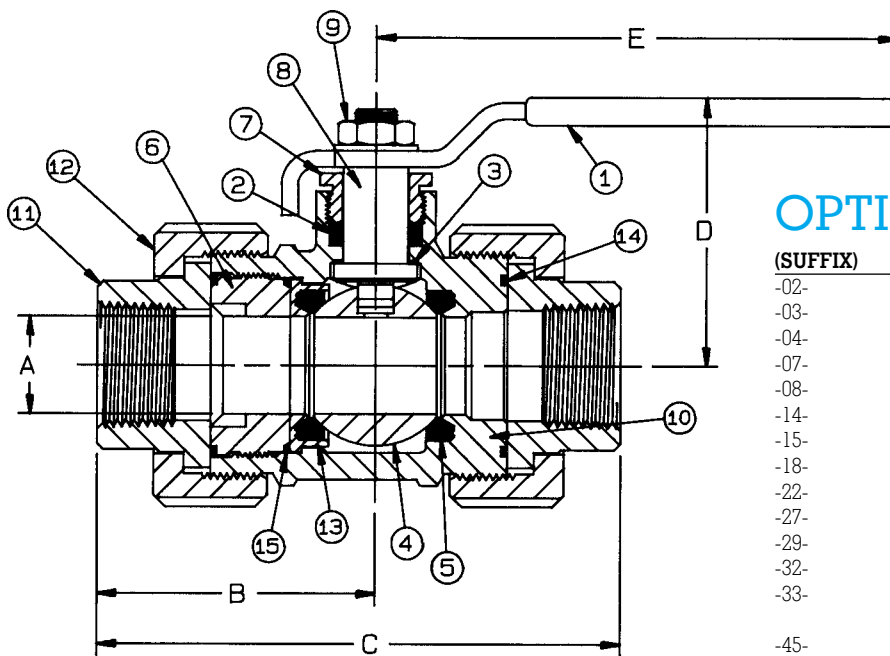
Threaded, 1/2" to 1" 2000 psig WOG, 1-1/4" to 2" 1500 psig WOG. Cold Non-Shock.
 150 psig Saturated Steam, Vacuum Service to 29 inches Hg.
 Federal Specification: WW-V-35C, Type: II, Composition: SS, Style: 1.

FEATURES

- Heavy duty quarter turn handles
- RPTFE seats and seals
- Blow-out-proof stem design
- Adjustable packing gland

STANDARD MATERIAL LIST

1. Lever and grip	304 SS w/vinyl	9. Lever nut	18-8 SS
2. Stem packing	RPTFE	10. Body	A351-CF8M
3. Stem bearing	RPTFE	11. Tailpiece (2)	A276-316
4. Ball	A276-316	12. Union nut (2)	Nitride A108-CS
5. Seat (2)	RPTFE	13. Seat holder	A276-316
6. Retainer	A276-316	14. Union seal (2)	RPTFE
7. Gland nut	A276-316	15. Retainer seal	RPTFE
8. Stem	A276-316		



OPTIONS AVAILABLE:

(SUFFIX)	OPTION	SIZES
-02-	Static Grounded	1/2" to 2"
-03-	1-1/4" Stem Extension	1/2" to 1-1/2"
-04-	2-1/4" Stem Extension	1/2" to 1-1/2"
-07-	Tee Handle	1/2" to 1-1/2"
-08-	90° Reversed Stem	1/2" to 2"
-14-	Vented Ball (see page J-2)	1/2" to 2"
-15-	Round Handle	1/2" to 1-1/2"
-18-	Plain Yellow Grip	1/2" to 2"
-22-	Fluorocarbon Union Seals	1/2" to 2"
-27-	Latch Lock Lever	1/2" to 1-1/2"
-29-	Firesafe	1/2" to 2"
-32-	SS Tee Handle & Nut	1/2" to 1-1/2"
-33-	Drilled and Tapped for Actuator Mounting	1/2" to 2"
-45-	Less Lever & Nut	1/2" to 2"
-46-	Latch Lock Lever - Lock Close Only	1/2" to 1-1/2"
-49-	Assembled Dry	1/2" to 2"
-57-	Cleaned for Gaseous Oxygen	1/2" to 2"
-60-	Static Grounded Ball & Stem	1/2" to 2"
-63-	Threaded x Solder	1/2" to 2"
-64-	250 Lb. Steam Trim	1/2" to 2"
-P01-	BSPP (Parallel) Thread Connection	1/2" to 2"
-T01-	BSPT (Tapered) Thread Connection	1/2" to 2"

STAINLESS STEEL DOUBLE UNION END BALL VALVE

NUMBER	SIZE	A	B	C	D	E	Wt.
76-303-01	1/2"	.62	2.27	4.33	2.12	4.87	2.88
76-304-01	3/4"	.81	2.46	4.51	2.31	4.87	3.81
76-305-01	1"	1.00	2.89	5.45	2.75	5.50	5.98
76-306-01	1-1/4"	1.25	2.88	5.32	2.97	5.50	8.47
76-307-01	1-1/2"	1.50	3.43	6.43	3.39	7.87	12.61
76-308-01	2"	1.75	3.75	6.87	4.12	9.87	16.88

**For Pressure/Temperature Ratings,
 Refer to Page N-15, Graph No. 14
 (1/2" to 1")
 Refer to Page N-14, Graph No.12
 (1-1/4" to 2")**

Apollo® 76-400 Series

Stainless Steel Double Union End Socket Weld Ball Valve

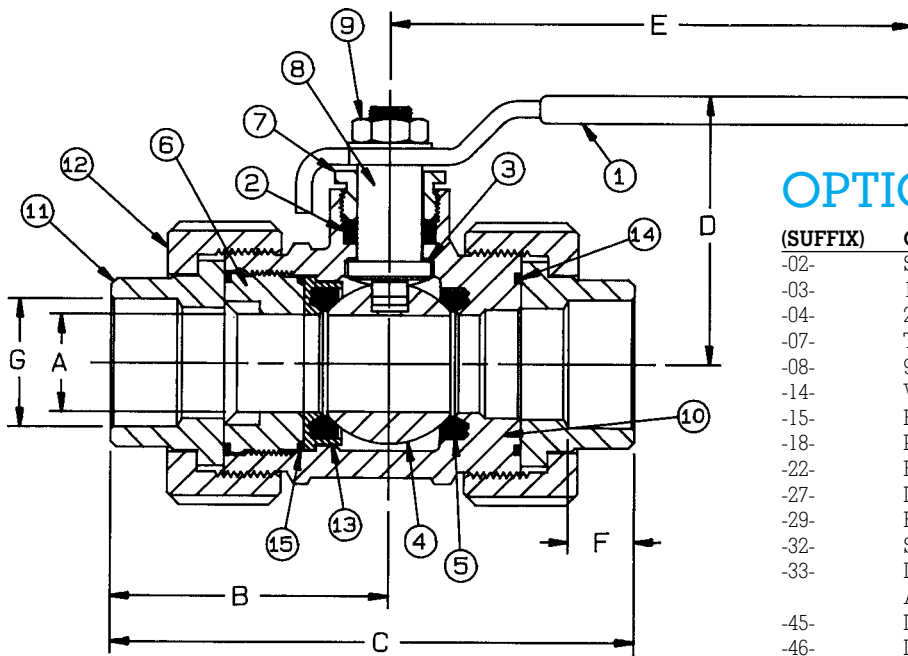
Socket Weld, 1/2" to 1" 2000 psig WOG, 1-1/4" to 2" 1500 psig WOG. Cold Non-Shock.
 150 psig Saturated Steam, Vacuum Service to 29 inches Hg.
 Federal Specification: WW-V-35C, Type: II, Composition: SS, Style: 1.

FEATURES

- Heavy duty quarter turn handles
- RPTFE seats and seals
- Blow-out-proof stem design
- Adjustable packing gland

STANDARD MATERIAL LIST

1. Lever and grip	304 SS w/vinyl	9. Lever nut	18-8 SS
2. Stem packing	RPTFE	10. Body	A351-CF8M
3. Stem bearing	RPTFE	11. Tailpiece (2)	A276-316
4. Ball	A276-316	12. Union nut (2)	Nitride steel
5. Seat (2)	RPTFE	13. Seat holder	A276-316
6. Retainer	A276-316	14. Union seal (2)	RPTFE
7. Gland nut	A276-316	15. Retainer seal	RPTFE
8. Stem	A276-316		



OPTIONS AVAILABLE:

(SUFFIX)	OPTION	SIZES
-02-	Static Grounded	1/2" to 2"
-03-	1-1/4" Stem Extension	1/2" to 1-1/2"
-04-	2-1/4" Stem Extension	1/2" to 1-1/2"
-07-	Tee Handle	1/2" to 1-1/2"
-08-	90° Reversed Stem	1/2" to 2"
-14-	Vented Ball(see page J-2)	1/2" to 2"
-15-	Round Handle	1/2" to 1-1/2"
-18-	Plain Yellow Grip	1/2" to 2"
-22-	Fluorocarbon Union Seals	1/2" to 2"
-27-	Latch Lock Lever	1/2" to 1-1/2"
-29-	Firesafe	1/2" to 2"
-32-	SS Tee Handle & Nut	1/2" to 2"
-33-	Drilled and Tapped for Actuator Mounting	1/2" to 2"
-45-	Less Lever & Nut	1/2" to 2"
-46-	Latch Lock Lever - Lock Close Only	1/2" to 1-1/2"
-49-	Assembled Dry	1/2" to 2"
-57-	Cleaned for Gaseous Oxygen	1/2" to 2"
-60-	Static Grounded Ball & Stem	1/2" to 2"
-64-	250 Lb. Steam Trim	1/2" to 2"

STAINLESS STEEL DOUBLE UNION END SOCKET WELD BALL VALVE

NUMBER	SIZE	A	B	C	D	E	F	G	Wt.
76-403-01	1/2"	.62	2.27	4.33	2.12	4.87	.43	.855	2.88
76-404-01	3/4"	.81	2.46	4.51	2.31	4.87	.56	1.065	3.81
76-405-01	1"	1.00	2.89	5.45	2.75	5.50	.68	1.330	5.98
76-406-01	1-1/4"	1.25	2.88	5.32	2.97	5.50	.81	1.675	8.47
76-407-01	1-1/2"	1.50	3.43	6.43	3.39	7.87	.87	1.915	12.61
76-408-01	2"	1.75	3.75	6.87	4.12	9.87	1.06	2.406	16.88

**For Pressure/Temperature Ratings,
 Refer to Page N-15, Graph No. 14
 (1/2" to 1")
 Refer to Page N-14, Graph No.12
 (1-1/4" to 2")**