

<u>MATERIALS OR STYLE</u>		<u>TYPE</u>	<u>VARIATIONS</u>	<u>SIZE</u>
70	Bronze	1 NPT Female/150 Flange	1 One Size Larger	1 1/4"
71	Bronze with pads	2 Solder & Soc. Weld/150 Flange Full Port	2 Male Retainer	2 3/8"
72	Carbon Steel, High Pressure	3 Union End NPT/Reg.Port Soc.Weld	3 Adjustable Stop Lever	3 1/2"
73	Carbon Steel	4 Union End Solder/Reg.Port Soc.Weld	4 Cu-Ni Ball & Stem	4 3/4"
73A	A105 Carbon Steel	5 Spring Return/High Pressure Full Port NPT	5 SS Sall & Stem	5 1"
74	Nickel	6 3-way, NPT/High Pressure Soc.Weld Full Port	6 Original Balancing Stop- Attach to Lever or T-Handle	6 1 1/4"
75	Pad-Locking Bronze	7 Butt Weld/300 Flange	7 One Size Smaller Female Retainer	7 1 1/2"
76	CF8M Stainless Steel	8 Male x Female, NPT/600 Flange	8 (Not Assigned)	8 2"
76F	CF8M Stainless Steel, Full Port	9 3-way Solder/O-Ring Boss/300 Flange Full Port	9 Pinned Retainer	9 2 1/2"
77	Bronze Full Port			0 3"
77C	Bronze Full Port Economy			A 4"
78	Special Valves			C 6"
79	Refrigerant Valves			E 8"
7A	Chlorine Carbon Steel			G 10"
7K	Bronze Full Port Drain			H 12"
80	Bronze, UL Listed			
81	Bronze UL Listed Plain Ball			
82	Bronze 3-Piece Full Port			
83	CS 3-Piece			
83R	CS 3-Piece, Actuator Ready			
85	SS 3-Piece, Reg.Port			
85R	SS 3-Piece, Reg.Port, Actuator Ready			
86	SS 3-Piece, Full Port			
86R	SS 3-Piece, FullPort, Actuator Ready			
87	CF8M SS Flanged			
87A	CF8M SS Flanged			
87A-400	Alloy-20 Flanged			
88	Carbon Steel Flanged			
88A	Carbon Steel Flanged			
89	Cast Carbon Steel w/Pads			
9A	Bronze, Hvy.Patt. Unibody			
90	Bronze, Unibody, UL Listed			
91	Bronze, Unibody			
92	Cast Carbon Steel Unibody			
93	CS Unibody			
95	Bronze Stop & Drain			
96	CF8M SS Unibody			
399	Alloy-20 NPT			
401	Alloy-20, 3-Piece, Full Port			

DESIGN

-01	Standard	-46	SS Latch Lock Lever, Lock in Closed Position Only
-02	Stem Grounded	-47	SS Oval Latch Lock Handle, SS Nut
-03	1-1/4" Carbon Steel Ext.Stem	-48	SS Oval Handle, No Latch, SS Nut
-04	2-1/4" Carbon Steel Ext.Stem	-49	Assembled Dry
-05	Plain Ball	-50	2-1/4" CS Locking Stem Extension
-06	2000 lb. 73-100 Series (1-1/4" to 2")	-51	One Tack Weld (I-7362-05-1X)
-07	Steel Tee Handle	-52	Two Tack Weld (I-7362-05-2X)
-08	90 degree reversed stem	-53	Three Tack Weld (I-7362-05-3X)
-09	SS Lever	-54	Four Tack Weld (I-7362-05-4X)
-10	SS Lever & Nut	-56	MultiFill Seats and Packing
-12	Stamp "157 SWP" & Bagged	-57	Oxygen Cleaned (Bronze and SS Only)
-13	Stamp "157 SWP"	-58	Chain Lever, Horizontal
-14	Side Vented Ball (uni-directional)	-59	SS External Trim - 3-pc Valves
-15	Wheel Handle, Steel	-60	Grounded Ball & Stem
-16	Chain Lever, Vertical	-61	Grounded Ball & Stem, Assembled Dry
-17	Rough Chrome Plate - Bronze Valves	-62	Body Centre Section
-21	UHMWPE Trim (non-PTFE)	-63	NPT x Solder/Socket Weld
-22	Viton Union Seals	-64	250 lb. Steam Trim
-23	Tank Flange (2" 3-pc valves only)	-65	MultiFill Seats & Graphite Packing
-24	Graphite Packing	-66	FNPT x Butt Weld
-25	Graphite Packing, Vented Ball & Tack Welded Ret.	-68	4" Stem Extension (3" & 4" 3-pc. 82 Series
-26	Chevron Pkg Vent Assd.Dry Monel Trim (7A)	-69	Purge Ports Drilled/Tapped @ Bottom & approx. 45" from Top
-27	SS Latch Lock Lever & Nut	-70	4" Extended Bonnet
-28	Actuator Mounting Pad Not Drilled/Tapped	-72	RTFE Packing
-29	Graphite Packing & Seals	-73	TFE Packing - Spiral Wound Body Seals - TFE Fillers - Flange BV
-30	Cam-Lock and Grounded Stem	-74	Graphite Packing - Spiral Wound Body Seals - Graphoil Fillers - Flange BV
-31	7B Series w/Boss not Drilled/Tapped	-75	MPTEF Seats, PTFE Packing, RPTFE Gaskets
-32	SS Hi-Rise Tee Handle & Nut	-76	Live Loaded 87A/88A Series (Lever)
-33	76-300 Series w/Pad Drilled/Tapped	-77	Live Loaded 87A/88A Series (Gear & Actuated)
-34	Nylatron Seats (96 Series)	-78	Delrin Seats
-35	VTFE Trim	-79	Nylon Seats/Graphite Packing 72 Series
-36	SS HiRise Round Handle, SS Nut	-80	Multi-Seal (Super TFE) 87A/88A Series
-38	Peek Seats & Bearing (Graphite packing & seals)	-97	Grnd.Whl.Handle, Pinned or Tack Welded
-39	SS Hi-Rise Locking Wheel Handle, SS Nut	-98	Grnd.Whl. Pinned or Tack Welded & 1-1/4" Stem Ext.
-40	Cyl-loc and Grounded Stem	-SW	Limit Switch Mounted
-41	Auto.Drain (Bronze Valves Only)	-MG	Gear Operated, Std. Hand Wheel
-42	Non-Vented Ball, No Holes in Slot (CS and SS)	-MH	Gear Operated, Std. Hand Wheel, Lockout Device
-43	Cyl-Loc, Grnd B&S, 680 LocTite or 2-Tack Welds	-MJ	Gear Operated, Oversize Hand Wheel
-44	Seal Weld 76-100 & 89-100	-MK	Gear Operated, Oversize Hand Wheel, Lockout Device
-45	Less Lever & Nut	-P01	BSPP (Parallel) Thread Connection
		-BC	Ball Check
		T01	BSPT (Tapered) Thread Connection

Apollo® 77C: The Contractors' Full-Port Bronze Ball Valve

77C-100 & 77C-200

Full Port Bronze Ball Valve with Solid Ball

Apollo's® solid ball design delivers real full-port performance.

Some valve manufacturers use a hollow ball in their "full-port" ball valves. A hollow ball creates turbulence inside the valve which causes significant drops in pressure and velocity. Plus, the media bouncing around inside the ball adds unnecessary stress to the valve and the system, leading to even more problems down the line.

Get solid full-port performance at an affordable price with the American-made Apollo 77C.

- Machined solid chrome-plated ball
- Multi-fill PTFE seats and seals
- Adjustable packing
- Blow-out proof stem design
- American-made bronze castings
- Vacuum service to 29 in. Hg
- Full-port design through 2"
- Available with stainless steel ball and stem as 77C-140 Series
- ANSI B16.18 solder end version available as 77C-200 Series

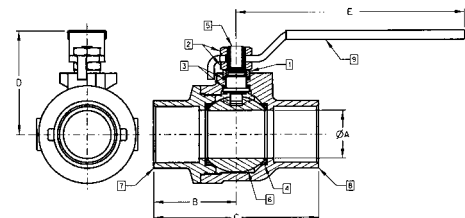
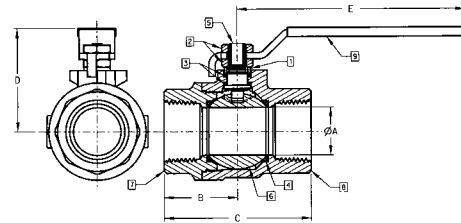
Model Number	Size (In.)	Dimensions (In.)														Wt.	
		A	B	C	D	E	F	G	H	I	J	K	L	M	Cv	(Lbs) -01	
77C-101	1/4	0.37	0.95	1.97	1.76	3.74	1.86	4.06	1.41	3.50	2.80	3.12	4.12	3.86	4.5	0.6	
77C-102	3/8	0.37	1.07	2.09	1.76	3.74	1.86	4.06	1.41	3.50	2.80	3.12	4.12	3.86	7.2	0.6	
77C-103	1/2	0.50	1.15	2.25	1.79	3.74	1.89	4.06	1.44	3.50	2.83	3.12	4.12	3.89	15.5	0.6	
77C-104	3/4	0.75	1.32	2.65	2.00	4.88	2.20	5.03	1.76	4.00	3.12	3.12	4.12	4.10	35.6	1.1	
77C-105	1	1.00	1.53	3.07	2.19	4.88	2.39	5.03	1.96	4.00	3.32	3.12	4.12	4.29	68.1	1.8	
77C-106	1-1/4	1.25	2.04	4.08	3.13	7.06	3.76	7.19	2.82	6.00	-	-	-	5.23	125.0	4.4	
77C-107	1-1/2	1.50	2.21	4.43	3.29	7.06	3.92	7.19	2.98	6.00	-	-	-	5.39	177.0	5.9	
77C-108	2	2.00	2.76	5.29	3.83	7.06	4.46	7.19	3.52	6.00	-	-	-	5.93	389.0	11.4	
77C-202	3/8	0.37	0.93	1.84	1.76	3.74	1.86	4.06	1.41	3.50	2.80	3.12	4.12	3.86	7.2	0.6	
77C-203	1/2	0.50	1.15	2.31	1.79	3.74	1.89	4.06	1.44	3.50	2.83	3.12	4.12	3.89	15.5	0.6	
77C-204	3/4	0.75	1.39	2.79	2.00	4.88	2.20	5.03	1.76	4.00	3.12	3.12	4.12	4.10	35.6	1.0	
77C-205	1	1.00	1.69	3.38	2.19	4.88	2.39	5.03	1.96	4.00	3.32	3.12	4.12	4.29	68.1	1.6	
77C-206	1-1/4	1.25	2.08	4.16	3.13	7.06	3.76	7.19	2.82	6.00	-	-	-	5.23	125.0	3.9	
77C-207	1-1/2	1.50	2.33	4.66	3.29	7.06	3.92	7.19	2.98	6.00	-	-	-	5.39	177.0	5.8	
77C-208	2	2.00	2.95	5.84	3.83	7.06	4.46	7.19	3.52	6.00	-	-	-	5.93	389.0	10.2	



77C-100



77C-200





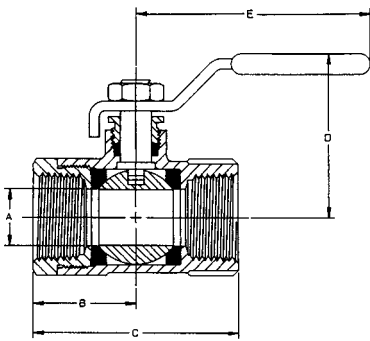
Reduced Port Economy Valves

32-100-01

Reduced Port Threaded Bronze Ball Valve

NPT threaded ball valve rated to 400 psig WOG cold, non-shock and 125 psig for saturated steam. Blowout-proof stem design with adjustable packing gland.

- Chromium plated ball
- PTFE seats and RPTFE stuffing box ring

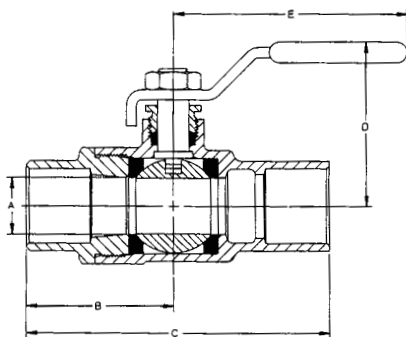


Model Number	Size (In.)	Dimensions (In.)				
		A	B	C	D	E
32-101-01	1/4	0.37	0.80	1.60	1.65	2.87
32-102-01	3/8	0.37	0.80	1.60	1.65	2.87
32-103-01	1/2	0.40	1.00	2.00	1.68	2.87
32-104-01	3/4	0.65	1.20	2.41	1.90	3.87
32-105-01	1	0.75	1.55	3.09	2.18	4.87
32-106-01	1-1/4	1.00	1.72	3.44	2.53	5.50
32-107-01	1-1/2	1.12	1.93	3.87	2.69	5.50
32-108-01	2	1.50	2.17	4.37	2.94	5.50

32-200-01

Reduced Port Solder End Bronze Valve

Solder end ball valve with vacuum service to 29" Hg. Rating of 400 psig WOG cold, non-shock and 125 psig for saturated steam. Blowout-proof stem design with adjustable packing gland.



Model Number	Size (In.)	Dimensions (In.)				
		A	B	C	D	E
32-203-01	1/2	0.40	1.29	2.65	1.68	2.87
32-204-01	3/4	0.65	1.73	3.56	1.90	3.87
32-205-01	1	0.75	2.11	4.26	2.18	4.87
32-206-01	1-1/4	1.00	2.36	4.60	2.53	5.50
32-207-01	1-1/2	1.12	2.84	5.42	2.69	5.50
32-208-01	2	1.50	3.33	6.48	2.94	5.50

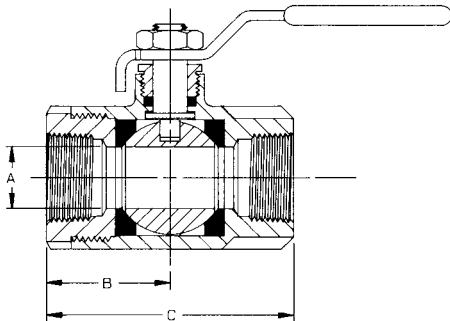
General Purpose Standard Port Valves

70-100-01

Standard Port Threaded Ball Valve

This Conbraco general purpose valve is the most widely used bronze ball valve in the industry. Like all 70 Series valves, it features a blowout-proof stem, RPTFE seats and stuffing box ring, adjustable packing gland and chromium-plated ball.

- Rated 600 psig WOG, cold, non-shock
- 150 psig for saturated steam



Model Number	Size (In.)	Dimensions* (In.)		
		A	B	C
70-101	1/4	0.37	1.03	2.06
70-102	3/8	0.37	1.03	2.06
70-103	1/2	0.50	1.12	2.25
70-104	3/4	0.68	1.50	3.00
70-105	1	0.87	1.68	3.37
70-106	1-1/4	1.00	2.00	4.00
70-107	1-1/2	1.25	2.18	4.37
70-108	2	1.50	2.34	4.68
70-109	2-1/2	2.00	3.12	6.25
70-100	3	2.50	3.37	6.75
70-10A [†]	4	3.12	3.68	7.37

*Body only. Total will vary with handle and end connection options. Contact Conbraco Customer Service for these dimensions.

All 70-100 Series valves are available in sizes 1/4" through 4".

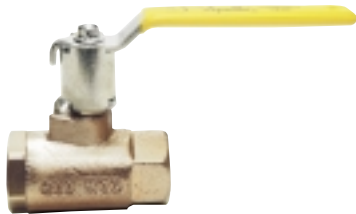
[†]High capacity water valve, formerly 78-255-01

70-100-03/04

Standard Ball Valve with Stem Extension

Ideal for hydronic or low pressure steam applications, this valve features a stem extension to accommodate insulation or to relocate handle position. This ball valve is equipped with chromium-plated ball, RPTFE seats and stuffing box ring, a blowout-proof stem design and adjustable packing gland.

- Rated 600 psig WOG, cold, non-shock
- 150 psig for saturated steam
- Specify -03 for 1-1/4" extension, -04 for 2-1/4" extension




70-100-16/58 Chain Lever Ball Valves

Reliable quarter turn operation in overhead applications. A favorite for use in industrial environments. Standard design features include blowout-proof stem and RPTFE seats and seals.



- Specify suffix -16 for assembly with valve in vertical position
- Specify -58 for valve in horizontal position

70-100-07 Threaded Valve with Tee Handle

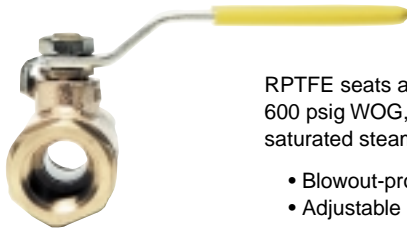
Tee handle is ideal when space is limited and where safety is a consideration. Handle still provides visual indication of OPEN or CLOSED position. Valve features a chromium-plated ball, RPTFE seats and stuffing box ring, a blowout-proof stem design and adjustable packing gland.



- Rated 600 psig WOG, cold, non-shock
- 150 psig for saturated steam

70-100-08 Threaded Ball Valve with 90° Reversed Stem

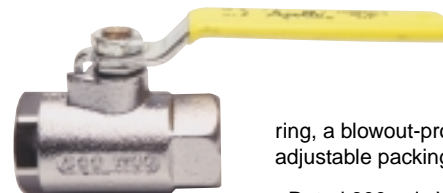
Use in critical applications when handle is required to be in a parallel position when closed. Features chromium-plated ball, RPTFE seats and stuffing box ring. Rated 600 psig WOG, cold, non-shock; 150 psig for saturated steam.



- Blowout-proof stem design
- Adjustable packing gland

70-100-17 Threaded Valve with Rough Chrome Plating

Use where a clean environment is required; for matching up with other chrome-plated equipment. Features a chromium-plated ball, RPTFE seats and stuffing box ring, a blowout-proof stem design and adjustable packing gland.



- Rated 600 psig WOG, cold, non-shock
- 150 psig for saturated steam

70-100-27 Threaded Ball Valve with Latch Lock

Sliding lock mechanism secures handle in open or closed position. Valve can also be pad-locked open or closed. Valve features blowout proof stem, RPTFE seats and stuffing box ring, chrome plated ball and adjustable packing gland.



- 600 psig WOG, cold, non-shock
- 150 psig for saturated steam
- Available with auto drain option for pneumatic applications. Use the following suffix key to specify latch lock valve with auto drain option: -27 -41

70-100-41 Ball Valve with Automatic Drain

When this valve is shut off for maintenance of pneumatic tool, pressure from valve to tool is automatically drained to atmosphere to prevent accidental operation of the tool, causing possible injury.



- Conforms to certain OSHA requirements in pneumatic installations
- Easy, safe maintenance of pneumatic tools
- Cannot be used where drained media could cause damage
- Temperature range = 50°F to 200°F
- Rated 125 psig air or water
- Available with latch lock option, specify -27 -41 suffix

70-100-30 Threaded Ball Valve with Cam-Lock Handle

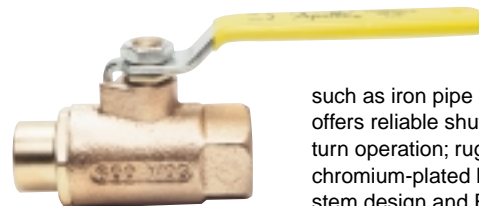
Patented Cam-Lock® handle gives valve extra protection against accidental operation. Reliable quarter-turn shut-off from a versatile, ruggedly built valve.



- RPTFE seats and stuffing box ring
- Rated 600 psig WOG, cold, non-shock

70-100-63 Ball Valve with Threaded and Solder Ends

Eliminates need for special pipe connector when connecting to different pipe such as iron pipe or copper tubing. Valve offers reliable shut-off and easy quarter-turn operation; ruggedly built with a chromium-plated ball, a blowout-proof stem design and RPTFE seats and stuffing box ring.



- 150 psig for saturated steam
- Rated 600 psig WOG, cold, non-shock

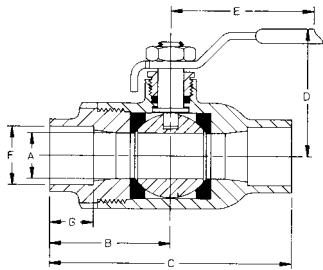
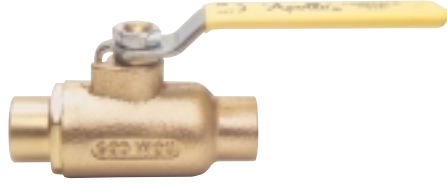


70-200-01

Solder End Ball Valve

Reliable ball valves designed for soft-soldering into lines without the need for disassembly. Tested valve installs without disturbing seats and seals. Soldering temperature: 500°F or less.

- Vacuum service to 29" Hg
- Adjustable packing gland
- RPTFE seats and stuffing box ring



Model Number	Size (In.)*	Dimensions (In.)						
		A	B	C	D	E	F	G
70-202	3/8	0.37	1.28	2.56	1.75	3.87	0.505	0.37
70-203	1/2	0.50	1.43	2.87	1.75	3.87	0.63	0.50
70-204	3/4	0.68	1.93	3.87	2.12	4.87	0.88	0.75
70-205	1	0.87	2.25	4.50	2.25	4.87	1.13	0.90
70-206	1-1/4	1.00	2.31	4.62	2.62	5.50	1.38	0.96
70-207	1-1/2	1.25	2.62	5.25	3.06	8.00	1.63	1.09
70-208	2	1.50	3.18	6.37	3.25	8.00	2.13	1.34
70-209	2-1/2	2.00	3.74	7.51	3.72	8.00	2.63	1.48
70-200	3	2.50	4.12	8.25	4.12	8.00	3.13	1.67

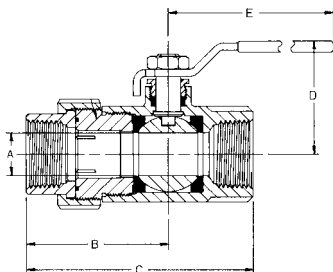
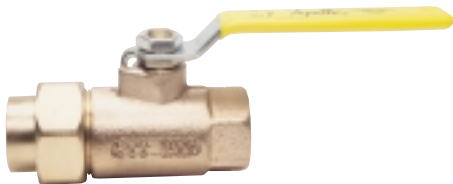
*Based on 70-200-01 – Dimensions may vary with options.
Contact Conbraco customer service for dimensions on 70-200-63.

70-300-01

Ball Valve With Single Union End

This valve combines pipe union with ball valve shut-off; it saves time and labor by eliminating the need for extra connections. Viton O-Ring sealed union requires light torque for proper seal.

- Chromium-plated ball
- Blowout-proof stem design
- Adjustable packing gland



Model Number	Size (In.)	Dimensions (In.)				
		A	B	C	D	E
70-301-01	1/4	0.37	1.90	2.93	1.75	3.87
70-302-01	3/8	0.37	1.90	2.93	1.75	3.87
70-303-01	1/2	0.50	2.01	3.14	1.81	3.87
70-304-01	3/4	0.68	2.46	3.96	2.12	4.87
70-305-01	1	0.87	2.78	4.46	2.25	4.87
70-306-01	1-1/4	1.00	2.68	4.68	2.62	5.50
70-307-01	1-1/2	1.25	2.87	5.06	3.05	8.00
70-308-01	2	1.50	3.25	5.59	3.24	8.00

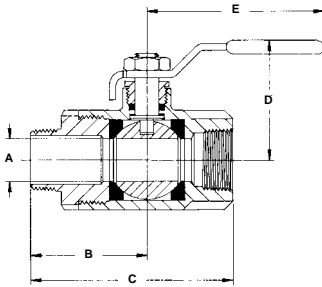


70-800-01

Male x Female NPT Ball Valve

Eliminates need for extra nipple when connecting to female connection to save time and labor. Ruggedly built for lasting performance with chromium-plated ball and blowout-proof stem design.

- Vacuum service to 29" Hg.
- RPTFE seats and stuffing box ring



Model Number	Size (In.)	Dimensions (In.)				
		A	B	C	D	E
70-801-01	1/4	0.37	1.40	2.43	1.75	3.87
70-802-01	3/8	0.37	1.46	2.50	1.75	3.87
70-803-01	1/2	0.50	1.68	2.81	1.81	3.87
70-804-01	3/4	0.68	2.00	3.50	2.12	4.87
70-805-01	1	0.87	2.31	4.00	2.25	4.87
70-806-01	1-1/4	1.00	2.31	4.31	2.62	5.50
70-807-01	1-1/2	1.25	3.00	5.18	3.06	8.00

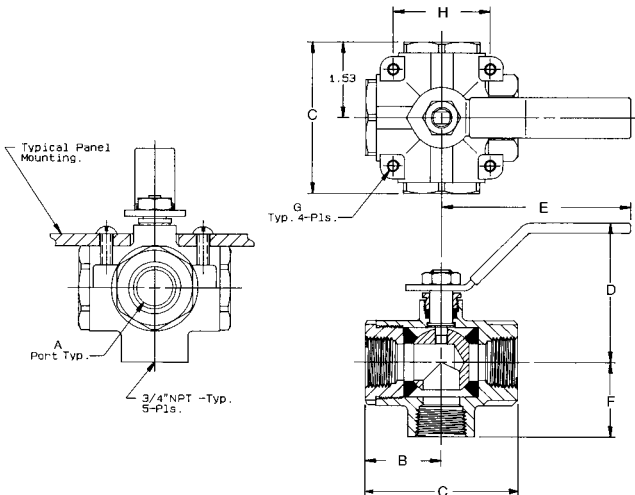
5-Port Valves

78-124-01 & 78-125-01A

5-Port Tank Selector Ball Valve

Perfect for fuel tank selection on large marine vessels, or in any application requiring control of multiple media through a single valve. Five-port construction allows access to four different tanks using only one valve. Unique ball design allows for higher flow capacities. Designed for easy installation and mounting.

- Bronze with stainless steel lever and nut
- 50 psig pressure rating
- Pointer on handle indicates selected inlet



Model Number	Dimensions (In.)								Wt.
	A	B	C	D	E	F	G	H	
78-124-01	0.50	1.26	2.52	2.27	3.53	1.12	10-24	1.40	1.06
78-125-01A	0.75	1.53	3.12	2.87	3.87	1.53	1/4-20	1.98	2.64

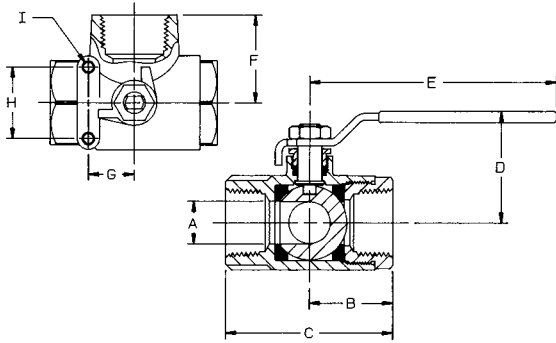
Diverter Valves

70-600-01

Threaded 3-Way Ball Valve

Ideal for applications requiring flow diversion, this valve combines the features of two 2-way valves. Its large ports make tank selection and fluid transfers simpler. Easy quarter-turn operation.

- 400 psig WOG rating
- 100 percent air tested under water



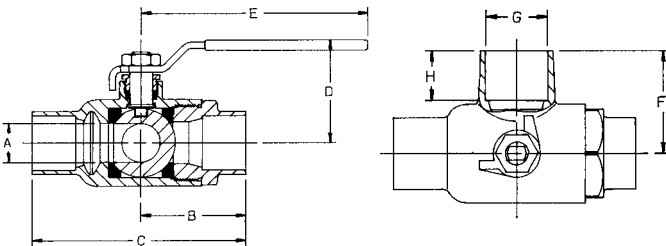
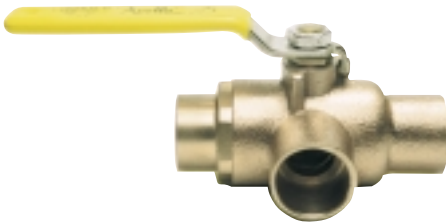
Model Number	Size (In.)	Dimensions (In.)								
		A	B	C	D	E	F	G	H	I
70-601-01	1/4	0.37	1.12	2.32	1.80	3.88	1.18	0.875	1.37	10-24
70-602-01	3/8	0.37	1.12	2.32	1.80	3.88	1.18	0.875	1.37	10-24
70-603-01	1/2	0.50	1.09	2.25	1.75	3.87	1.18	0.87	1.37	10-24
70-604-01	3/4	0.68	1.50	3.00	2.12	4.87	1.62	0.87	1.37	10-24
70-605-01	1	0.81	1.59	3.18	2.25	4.87	1.71	0.87	1.37	10-24
70-606-01	1-1/4	1.00	1.97	3.95	2.69	5.50	2.01	0.93	1.50	1/4-20
70-607-01	1-1/2	1.25	2.21	4.40	2.87	5.50	2.38	0.94	1.50	1/4-20
70-608-01	2	1.50	2.34	4.69	3.00	5.50	2.50	0.94	1.50	1/4-20

70-900-01

3-Way Diverter Valve With Solder Ends

Tank selection and fluid transfers are easier because of this diverter valve's large ports. Rated 400 psig WOG. The valve is 100 percent air tested under water.

- Simple quarter-turn operation
- Many long service life features



Model Number	Size (In.)	Dimensions (In.)								
		A	B	C	D	E	F	G	H	
70-903-01	1/2	0.50	1.44	2.87	1.75	3.87	1.34	0.628	0.50	
70-904-01	3/4	0.68	1.94	3.87	2.12	4.87	1.69	0.878	0.90	
70-905-01	1	0.81	2.19	4.42	2.25	4.87	1.87	1.129	0.90	



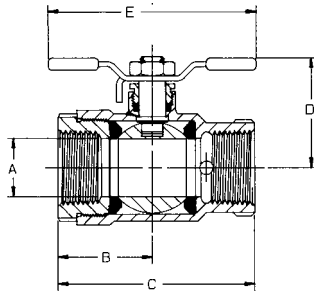
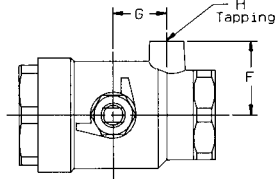
Two-Piece Full Port Valves

7B-100-01

Full Port Hydro Valve With Double Female NPT

Design features tee handle and side tapping; can be used as a drain feature or with 1/8" and 1/4" test cocks. Valve offers extended service life with its chromium-plated ball and RPTFE seats and stuffing box ring.

- Rated 400 psig WOG, cold, non-shock
- Blowout-proof stem design



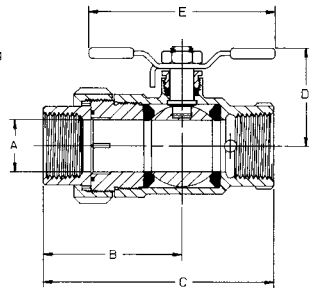
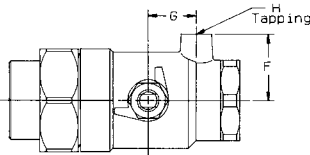
Model Number	Size (In.)	Dimensions (In.)							
		A	B	C	D	E	F	G	H
7B-101-01	1/4	0.37	1.03	2.06	1.37	2.68	0.93	0.53	1/8 NPT
7B-102-01	3/8	0.37	1.03	2.06	1.37	2.68	0.93	0.53	1/8 NPT
7B-103-01	1/2	0.50	1.09	2.18	1.43	2.68	1.00	0.53	1/8 NPT
7B-104-01	3/4	0.75	1.28	2.68	1.62	3.00	1.12	0.75	1/8 NPT
7B-105-01	1	1.00	1.66	3.43	1.90	4.00	1.31	0.94	1/8 NPT
7B-106-01	1-1/4	1.25	1.87	3.87	2.18	4.00	1.62	1.15	1/4 NPT
7B-107-01	1-1/2	1.50	2.05	4.22	2.60	5.62	1.81	1.31	1/4 NPT
7B-108-01	2	2.00	2.47	5.02	2.95	5.62	2.18	1.68	1/4 NPT

7B-300-01

Full Port Hydro Valve With Two Female NPT Ports And Single Union End

Valve offers union ends to make assembly and disassembly easier. Rated 400 psig WOG, cold, non-shock, it is equipped with a rugged chromium-plated ball and PTFE seats and stuffing box ring.

- Stem designed to be blowout-proof
- Full flow, minimum pressure drop



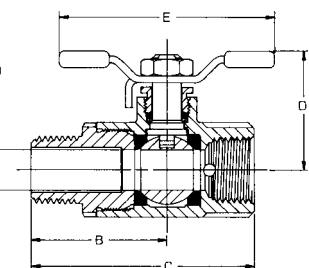
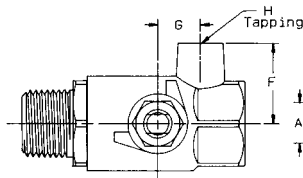
Model Number	Size (In.)	Dimensions (In.)							
		A	B	C	D	E	F	G	H
7B-301-01	1/4	0.37	2.13	2.92	1.37	2.68	0.93	0.53	1/8 NPT
7B-303-01	1/2	0.50	2.21	3.08	1.43	2.68	0.93	0.53	1/8 NPT
7B-304-01	3/4	0.75	2.25	3.67	1.62	3.00	1.12	0.75	1/8 NPT
7B-305-01	1	1.00	2.71	4.50	1.90	4.00	1.31	0.94	1/8 NPT
7B-307-01	1-1/2	1.50	3.43	5.62	2.60	5.62	1.81	1.31	1/4 NPT
7B-308-01	2	2.00	4.00	6.56	2.95	5.62	2.18	1.68	1/4 NPT

7B-800-01

Male x Female Full Port Hydro Ball Valve

Eliminates leak path and need for extra nipples. Full port design assures full flow and minimum pressure drop. Long-life features include adjustable packing gland, chromium-plated ball and RPTFE stuffing box ring.

- Rated 125 psig for saturated steam
- 400 psig WOG, cold, non-shock



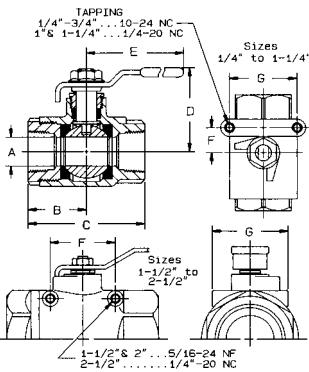
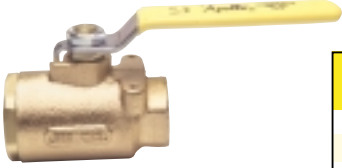
Model Number	Size (In.)	Dimensions (In.)							
		A	B	C	D	E	F	G	H
7B-801-01	1/4	0.37	1.40	2.43	1.37	2.56	0.93	0.53	1/8 NPT
7B-802-01	3/8	0.37	1.46	2.50	1.37	2.56	0.93	0.53	1/8 NPT
7B-803-01	1/2	0.50	1.68	2.78	1.43	2.56	1.00	0.53	1/8 NPT
7B-804-01	3/4	0.75	1.88	3.28	1.70	2.68	1.12	0.75	1/8 NPT
7B-805-01	1	1.00	2.39	4.17	1.93	3.62	1.31	0.94	1/8 NPT
7B-806-01	1-1/4	1.25	2.66	4.66	2.13	3.62	1.62	1.15	1/4 NPT
7B-807-01	1-1/2	1.50	2.86	5.03	2.71	5.12	1.81	1.31	1/4 NPT
7B-808-01	2	2.00	3.34	5.89	3.06	5.12	2.18	1.68	1/4 NPT

77-100-01

Full Port NPT Ball Valve

Designed for easy actuator mounting or panel mounting where highest Cv values are required. Chromium-plated ball and RPTFE seats and stuffing box ring. Also available with solder connections and 250 lb. steam trim option.

- Full flow and minimum pressure drop
- Extended stems optional
- Chain lever kits available 3/4" - 2 1/2"



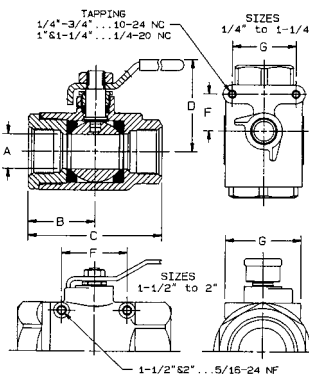
Model Number	Size (In.)	Dimensions (In.)						
		A	B	C	D	E	F	G
77-101-01	1/4	0.43	1.12	2.25	1.81	3.87	0.50	1.12
77-102-01	3/8	0.50	1.12	2.25	1.81	3.87	0.50	1.12
77-103-01	1/2	0.50	1.12	2.25	1.81	3.87	0.50	1.12
77-104-01	3/4	0.81	1.56	3.12	2.12	4.87	0.87	1.37
77-105-01	1	1.00	1.81	3.62	2.62	5.50	0.93	1.50
77-106-01	1-1/4	1.25	2.12	4.25	2.87	5.50	0.93	1.50
77-107-01	1-1/2	1.50	2.37	4.75	3.34	8.00	2.08	3.06
77-108-01	2	2.00	2.65	5.37	3.71	8.00	2.41	3.52
77-109-01	2-1/2	2.50	3.25	6.50	4.12	8.00	2.75	3.37

77-900-01

Full-Port SAE Straight-Thread O-Ring Boss Ball Valves

Apollo® full-port SAE straight thread ball valves with O-Ring boss connections are designed for extended leak-free and energy saving performance in a broad range of applications, especially in manufacturing environments. Their straight thread sealing technology is in high demand in the automotive industries and in fluid power applications. Sizes 1/4" to 2". Rated 600 WOG cold non-shock, 150 psig steam.

- Drilled and tapped actuation pad standard
- Chrome plated ball standard
- Blowout-proof stem and lever handle standard



Model Number	Nom. Tube O.D. (In.)	Size (In.)	Dimensions (In.)						
			A	B	C	D	E	F	G
77-901-01	1/4	7/16-20	0.43	1.12	2.25	1.81	3.87	0.50	1.12
77-902-01	3/8	9/16-18	0.50	1.12	2.25	1.81	3.87	0.50	1.12
77-903-01	1/2	3/4-16	0.50	1.12	2.25	1.81	3.87	0.50	1.12
77-904-01	3/4	11/16-12	0.81	1.56	3.12	2.12	4.87	0.87	1.37
77-905-01	1	15/16-12	1.00	1.81	3.62	2.62	5.50	0.93	1.50
77-906-01	1-1/4	1-5/8-12	1.25	2.12	4.25	2.87	5.50	0.93	1.50
77-907-01	1-1/2	1-7/8-12	1.50	2.37	4.75	3.34	8.00	2.08	3.06
77-908-01	2	2-1/2-12	2.00	2.65	5.37	3.71	8.00	2.41	3.52



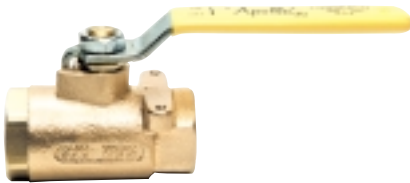
Standard Two-Piece Valve w/Mounting Pad

71-100-01

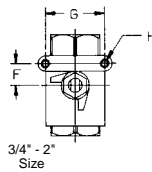
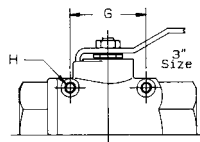
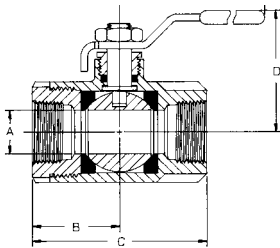
Ball Valve With Mounting Pad

Valve designed to easily accommodate spring return handle, actuator or simple panel mounting. Threaded end connections with RPTFE seats and stuffing box ring. Standard port.

- 3/4" to 3" models
- Round handle optional



Model Number	Size (In.)	Dimensions (In.)							
		A	B	C	D	E	F	G	H
71-104-01	3/4	0.68	1.50	3.00	2.12	4.87	0.87	1.37	10-24 NC
71-105-01	1	0.87	1.68	3.37	2.25	4.87	0.87	1.37	10-24 NC
71-106-01	1-1/4	1.00	2.00	4.00	2.62	5.50	0.93	1.50	1/4-20 NC
71-107-01	1-1/2	1.25	2.18	4.37	2.87	8.00	0.93	1.50	1/4-20 NC
71-108-01	2	1.50	2.34	4.68	3.06	8.00	0.93	1.50	1/4-20 NC
71-100-01	3	2.50	3.37	6.75	4.12	8.00	N/A	2.75	1/4-20 NC



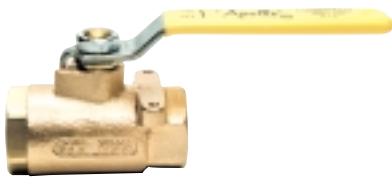
Steam Valves

71-140-64

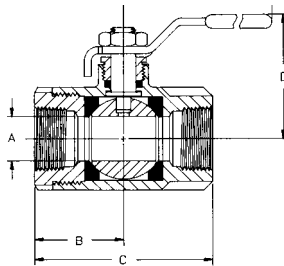
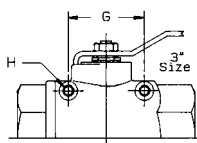
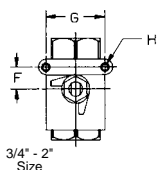
250 Lb. Steam Valve With Mounting Pad

Designed for reliable operation on high pressure steam systems and with fluids of widely varying temperatures. Ideal for use with high thermal expansion rates. Stainless steel ball and stem standard. Ball has a thermal relief hole drilled into stem slot.

- Multi-filled RPTFE seats
- Special high-temperature MTFE stem packing



Model Number	Size (In.)	Dimensions (In.)							
		A	B	C	D	E	F	G	H
71-144-64	3/4	0.68	1.50	3.00	2.12	4.87	0.87	1.37	10-24 NC
71-145-64	1	0.87	1.68	3.37	2.25	4.87	0.87	1.37	10-24 NC
71-146-64	1-1/4	1.00	2.00	4.00	2.62	5.50	0.93	1.50	1/4-20 NC
71-147-64	1-1/2	1.25	2.18	4.37	2.87	8.00	0.93	1.50	1/4-20 NC
71-148-64	2	1.50	2.34	4.68	3.06	8.00	0.93	1.50	1/4-20 NC
71-140-64	3	2.50	3.37	6.75	4.12	8.00	N/A	2.75	1/4-20 NC



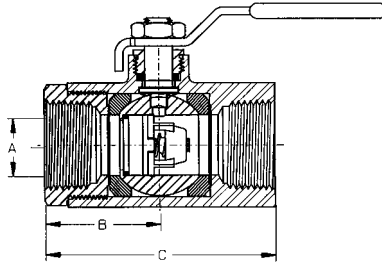
Unidirectional Ball Valves

70-100-BC

Ball Valve With Integral Check

Unidirectional ball valve ideally suited for all water and air systems not to exceed 250 psig. This combination product offers a positive shut-off and a bubble-tight check capability where space savings is a must. Perfect for OEM use.

- Sizes 1/2" through 2"
- FNPT Threads



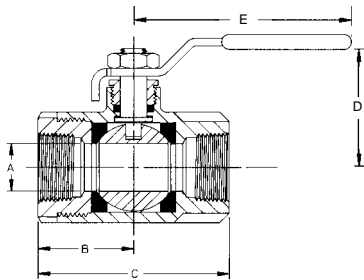
Model Number	Size (In.)	Dimensions (In.)		
		A	B	C
70-103	1/2	0.50	1.12	2.25
70-104	3/4	0.68	1.50	3.00
70-105	1	0.87	1.68	3.37
70-106	1-1/4	1.00	2.00	4.00
70-107	1-1/2	1.25	2.18	4.37
70-108	2	1.50	2.34	4.68

Hydronic Valves

70-120-01

Ball Valve With Adjustable Stop Lever

This versatile hydronic valve provides easy screw controlled incremental balancing adjustments when variation is needed. Special design makes a model combination shut-off and balancing valve.



Model Number	Size (In.)	Dimensions (In.)				
		A	B	C	D	E
70-121-01	1/4	0.37	1.03	2.06	1.75	3.87
70-122-01	3/8	0.37	1.03	2.06	1.75	3.87
70-123-01	1/2	0.50	1.12	2.25	1.75	3.87
70-124-01	3/4	0.68	1.50	3.00	2.12	4.87
70-125-01	1	0.87	1.68	3.37	2.25	4.87
70-126-01	1-1/4	1.00	2.00	4.00	2.62	5.56
70-127-01	1-1/2	1.25	2.18	4.37	3.06	5.56
70-128-01	2	1.50	2.34	4.68	3.25	5.56
70-129-01	2-1/2	2.50	3.25	6.50	4.12	5.56
70-120-01	3	2.50	3.37	6.75	4.12	5.56

70-120-04

Valve With Balancing Stop And Stem Extension

Ideal for HVAC systems, valve offers a balancing stop plate and a 2-1/4" stem extension combination to accommodate insulation and handle repositioning. Rated 600 psig WOG, cold, non-shock; 150 psig for saturated steam.



- Chromium-plated ball
- RPTFE seats, stuffing box ring
- Blowout-proof stem design and adjustable packing gland
- Contact customer service for exact handle dimensions



70-150-01

Ball Valve With Standard Balancing Stop Plate

Designed for hydronic applications, this valve comes with a simple stop plate that fits over its standard lever handle. Also available with tee or round handles. Features a chromium-plated ball, RPTFE seats and stuffing box ring, a blowout-proof stem design and adjustable packing gland.

- Rated 600 psig WOG, cold, non-shock
- 150 psig for saturated steam



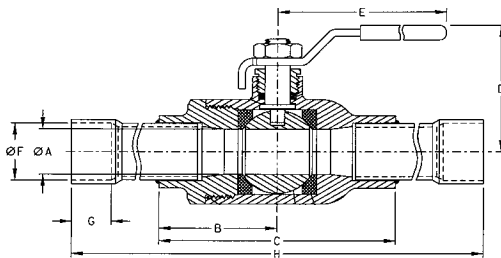
70-200-C8

Bronze Standard Port Ball Valve With 6" Female Brazed Extensions

Solder end, 600 psig WOG, cold non-shock. 150 psig Saturated Steam. Vacuum Service to 29 inches Hg. MSS SP-110:Ball Valves, Threaded, SW, Solder Joint, Grooved & Flared Ends.



- Chromium plated ball
- Adjustable packing gland
- RPTFE seats and stuffing box ring
- Blow-out proof stem design



Model Number	Size (In.)	Dimensions (In.)								
		A	B	C	D	E	F	G	H	
70-203-C8	1/2	0.50	1.43	2.87	1.75	3.87	0.63	0.50	14.87	
70-204-C8	3/4	0.68	1.93	3.87	2.12	4.87	0.88	0.75	15.87	
70-205-C8	1	0.87	2.25	4.50	2.25	4.87	1.13	0.90	16.50	
70-206-C8	1-1/4	1.00	2.31	4.62	2.62	5.50	1.38	0.96	16.62	
70-207-C8	1-1/2	1.25	2.62	5.25	3.06	8.00	1.63	1.09	17.25	
70-208-C8	2	1.50	3.18	6.37	3.25	8.00	2.13	1.34	18.37	
70-209-C8A	2-1/2	2.00	3.74	7.51	3.75	8.00	2.63	1.48	19.51	
70-200-C8	3	2.50	4.12	8.25	4.12	8.00	3.13	1.67	20.25	

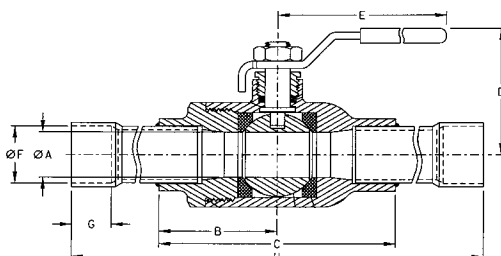
77-200-C8

Bronze Full Port Ball Valve With 6" Female Brazed Extensions

Solder end, 600 psig WOG, Cold Non-shock. 150 psig Saturated Steam. Vacuum Service to 29 inches Hg. MSS SP-110:Ball Valves, Threaded, SW, Solder Joint, Grooved & Flared Ends.



- Chromium plated ball
- Adjustable packing gland
- RPTFE seats and stuffing box ring
- Blow-out proof stem design
- Full port for full flow and min. pressure drop



Model Number	Size (In.)	Dimensions (In.)								
		A	B	C	D	E	F	G	H	
77-204-C8	3/4	0.81	2.12	4.12	2.12	4.87	0.88	0.75	16.12	
77-205-C8	1	1.00	2.33	4.64	2.62	5.50	1.13	0.90	16.64	
77-206-C8	1-1/4	1.25	2.60	5.15	2.87	5.50	1.38	0.96	17.15	
77-207-C8	1-1/2	1.50	3.00	6.00	3.34	8.00	1.63	1.09	18.00	
77-208-C8	2	2.00	3.62	7.24	3.71	8.00	2.13	1.34	19.24	
77-209-C8	2-1/2	2.50	3.93	7.87	4.12	8.00	2.63	1.48	19.87	



70-200-63

Ball Valve With Threaded And Solder Ends

Eliminates special pipe connector for connecting dissimilar piping such as iron and copper. Reliable shut-off and easy quarter-turn operation. Features chromium-plated ball, a blowout-proof stem design and RPTFE seats and stuffing box ring.

- 150 psig for saturated steam
- Rated 600 psig WOG, cold, non-shock

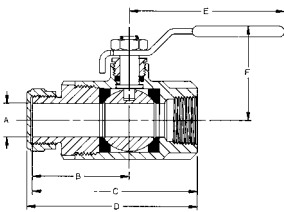
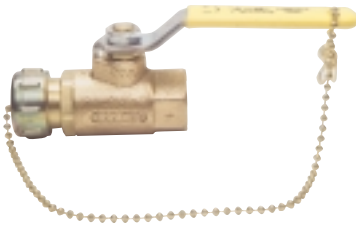


78-100-01

Cap And Chain Valve With Threaded x 3/4 Inch Hose Connection

Ideally suited for direct connections to hoses, valve features a securely attached cover with chain which prevents damage to hose threads. -200 model designed for soft soldering into lines without disassembly. Features chromium-plated ball, blowout-proof stem design and RPTFE seats and stuffing box ring.

- Adjustable packing gland
- New pressure-containing version available



Model Number	Size (In.)	Dimensions (In.)					
		A	B	C	D	E	F
78-103-01	1/2 NPT x 3/4 Hose	0.50	1.68	2.81	2.95	3.87	1.75
78-104-01	3/4 NPT x 3/4 Hose	0.68	1.96	3.50	3.65	4.87	2.12
78-203-01	1/2 Solder x 3/4 Hose	0.50	1.65	3.07	3.22	3.87	1.75
78-204-01	3/4 Solder x 3/4 Hose	0.68	1.93	3.85	4.00	4.87	2.12



78-664-01

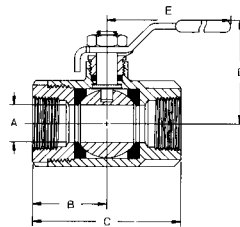
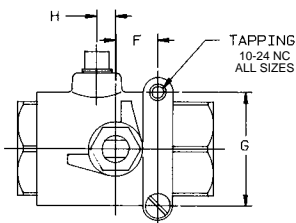
Bronze Ball Valve With Center Drain

Center tap drain allows for winterization or purge and drain function. Features bronze body with built-in mounting pad for panel mounting or actuation. Chrome plated ball, RPTFE seats and stuffing box ring are standard, as are stainless steel lever and nut. Ideal for hydronic heating and marine applications.

- Sizes 3/4" through 2"
- Tapered Pipe Threads



Model Number	Size (In.)	Dimensions (In.)							
		A	B	C	D	E	F	G	H
78-664-01	3/4	0.68	1.50	3.00	2.12	4.87	0.87	1.37	0.17
78-665-01	1	0.87	1.68	3.37	2.25	4.87	0.87	1.37	0.21
78-666-01	1-1/4	1.00	2.00	4.00	2.62	5.50	0.93	1.50	0.28
78-667-01	1-1/2	1.25	2.18	4.37	3.05	8.00	0.93	1.50	0.40
78-962-01	2	1.50	2.34	4.68	3.24	8.00	0.93	1.50	0.45



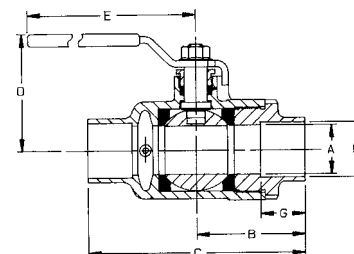
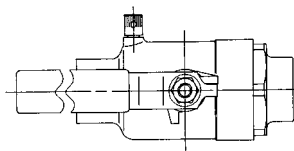
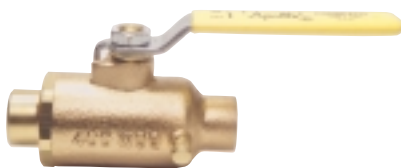
95-200-01

Full Port Solder End Stop And Waste Valve

Perfect choice for hydronic and water systems where system draining is required. Replaces globe style stop and waste valves. Designed to be soft soldered into lines with no disassembly.

- Rated 400 psig WOG, cold non-shock
- Drain cap designed to prevent fluid loss
- Adjustable packing gland

Model Number	Size (In.)	Dimensions (In.)						
		A	B	C	D	E	F	G
95-203-01	1/2	0.50	1.43	2.87	1.75	3.87	0.63	0.50
95-204-01	3/4	0.81	2.12	4.12	2.15	4.87	0.88	0.75
95-205-01	1	1.00	2.21	4.43	2.43	4.87	1.13	0.90

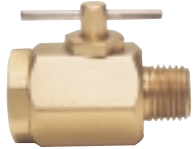


Instrumentation Valves

78-250/260



78-250: Bronze

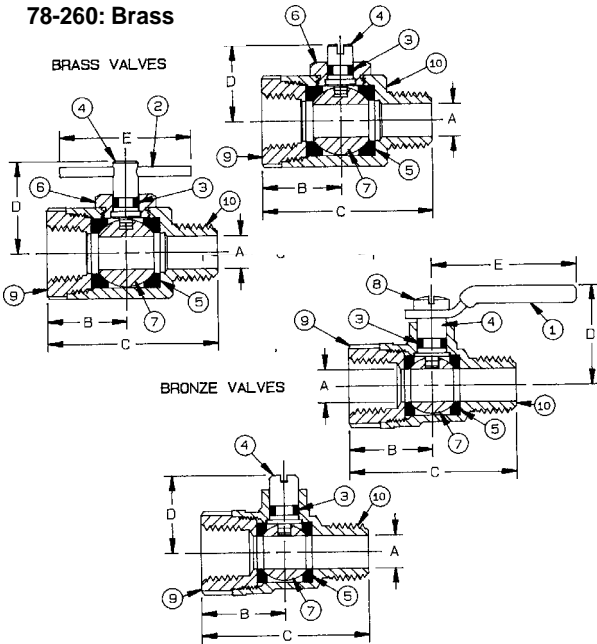


78-260: Brass

Brass And Bronze Instrumentation Ball Valve

Male x Female Threaded. 400 psig WOG, Cold Non Shock. Air & Liquid Service Rating.

- Micro-finish ball
- Blow-out-proof stem design
- PTFE seats
- Nitrile stem seal
- Plated steel tee handle
- Compact design
- Optional mixed end fittings available



BRASS INSTRUMENTATION BALL VALVE- Tee Handle								
Model Number	Size (In.)	Dimensions (In.)					Cv*	Wt.
78-260-05	1/8M X 1/8F	0.21	0.37	1.43	0.87	1.25	4.00	0.20
78-261-05	1/4M X 1/4F	0.31	0.43	1.43	0.87	1.25	5.50	0.19
BRASS INSTRUMENTATION BALL VALVE - Screw Slot								
Model Number	Size (In.)	Dimensions (In.)					Cv*	Wt.
78-262-05	1/8M X 1/8F	0.21	0.37	1.43	0.75	N/A	4.00	0.20
78-263-05	1/4M X 1/4F	0.31	0.43	1.43	0.75	N/A	5.50	0.19
BRONZE INSTRUMENTATION BALL VALVE - Screw Slot								
Model Number	Size (In.)	Dimensions (In.)					Cv*	Wt.
78-257-01	1/8M X 1/4F	0.21	0.80	1.60	0.72	N/A	4.00	0.19
78-258-01	1/4M X 1/4F	0.31	0.80	1.60	0.72	N/A	5.50	0.19
BRONZE INSTRUMENTATION BALL VALVE - Lever Handle								
Model Number	Size (In.)	Dimensions (In.)					Cv*	Wt.
78-267-01	1/4M X 1/4F	0.25	0.65	1.45	0.93	1.37	5.50	0.20

*The Cv factor is the gallons of water per minute that the valve will pass with a 1 psig pressure drop.

Irrigation Valves

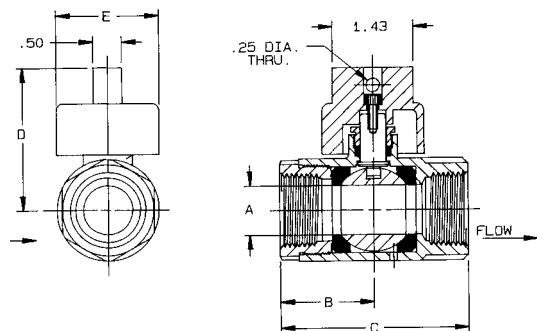
78-620-01



Threaded Irrigation Valve

Ideal for underground use or where drained media will not cause damage. Auto-drain feature is standard. Features a stainless steel cover, chromium-plated ball, adjustable packing gland, RPTFE seats and seals and blowout-proof stem design.

- Rated 200 psig water, cold, non-shock
- Temperature range: +50°F to 200°F



Model Number	Size (In.)	Dimensions (In.)				
78-621-01	3/4	0.68	1.47	2.96	2.40	1.81
78-622-01	1	0.87	1.66	3.34	2.53	1.81
78-623-01	1-1/4	1.00	1.98	3.97	3.00	2.50
78-624-01	1-1/2	1.25	2.12	4.28	3.18	2.50
78-625-01	2	1.50	2.35	4.67	3.37	2.50



78-130

Female End Valve for Underground Service

The 78-130 Series is ideal for underground or below grade applications. This series (1/4" - 2" FNPT) features a square head nut welded to the stem to allow operations with a ground key from standard grade.



78-114-01

Optional End Connection Valve for Underground Service

The 78-114-01 features the same square head nut as the 78-130 Series but with an optional SAE male thread on one end. Apollo® valves can be manufactured with a variety of end connections to meet your specific underground service requirements.



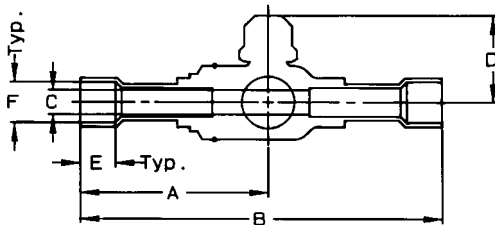
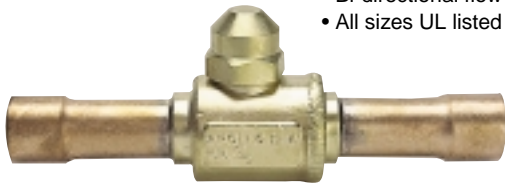
Refrigerant Valves

79-700-01

UL-Listed Refrigerant Ball Valve Assembly

Built for easy installation and long service life. Complete hermetically welded assembly includes copper extensions and forged brass refrigerant ball valve with capped, triple-sealed stem to reduce leaks. Sizes from 3/8" to 3-1/8" O.D. Tube. Chrome plated ball; RPTFE seats and seals.

- Full-port through 2-5/8"
- Bi-directional flow design
- All sizes UL listed



Model Number	Size (In.)	Dimensions (In.)						
		A	B	C	D	E	F	Cv*
79-701-01	3/8	3.38	6.45	0.45	1.56	0.38	0.38	8.5
79-702-01	1/2	3.38	6.45	0.45	1.56	0.38	0.50	8.5
79-703-01	5/8	3.56	6.82	0.50	1.56	0.50	0.62	9.8
79-704-01	7/8	3.91	7.53	0.68	1.79	0.75	0.87	32.0
79-705-01	1-1/8	4.39	8.51	0.87	1.98	0.90	1.12	44.0
79-706-01	1-3/8	4.42	8.94	1.25	2.62	0.96	1.38	66.0
79-707-01	1-5/8	4.55	9.19	1.25	2.62	1.09	1.62	148.0
79-708-01	2-1/8	5.16	10.31	1.50	2.93	1.34	2.12	218.0
79-709-01	2-5/8	6.50	13.00	2.50	3.90	1.48	2.62	440.0
79-600-01	3-1/8	7.00	14.00	2.50	3.90	1.67	3.12	390.0

*The Cv factor is the gallons of water per minute that the valve will pass with 1 psig pressure drop.

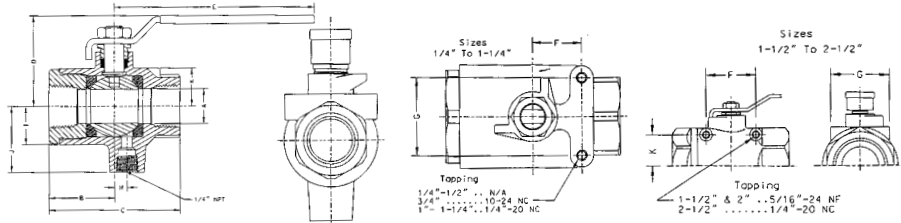
Air Exhaust Valves

7K-100-01

Full-Port Safety Exhaust Valve With 1/4" NPT Tap For Drain

Built for easy installation and long service life. For use on pneumatic equipment where full flow is required. Standardly furnished with a 1/4" NPT tapped drain to accommodate a muffler or to pipe the exhausted air to a safe location. For optional stainless steel latch lock handle that locks in the closed position only, specify suffix (-46).

- Sizes 1/4 " through 2-1/2"
- FNPT Threads
- Rated 125 psig – air or water
- Temperature range: +50°F to +200°F



Note: This View NOT TO SCALE

Model Number	Size (In.)	Dimensions (In.)										
		A	B	C	D	E	F	G	H	I	J	K
7K-101-01	1/4	0.37	1.03	2.06	1.75	3.87	N/A	N/A	0.09	0.53	1.18	N/A
7K-102-01	3/8	0.37	1.03	2.06	1.75	3.87	N/A	N/A	0.09	0.53	1.18	N/A
7K-103-01	1/2	0.50	1.10	2.19	1.75	3.87	N/A	N/A	0.12	0.59	1.25	N/A
7K-104-01	3/4	0.81	1.56	3.12	2.12	4.78	0.87	1.37	0.29	0.90	1.56	0.90
7K-105-01	1	1.00	1.80	3.61	2.62	5.50	0.93	1.50	0.31	1.12	1.78	1.12
7K-106-01	1-1/4	1.25	2.12	4.25	2.87	5.50	0.93	1.50	0.37	1.37	2.03	1.37
7K-107-01	1-1/2	1.50	2.37	4.74	3.30	7.78	2.08	3.06	0.50	1.56	2.21	1.28
7K-108-01	2	2.00	2.70	5.38	3.71	7.78	2.41	3.52	0.62	2.03	2.68	1.56
7K-109-01	2-1/2	2.50	3.25	6.50	4.05	7.78	2.75	3.37	1.09	2.34	3.00	2.00

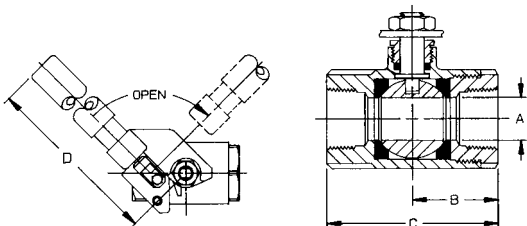
Gas/Fuel Shut-Off Valves

71-500-01

Valve With Spring Return Handle

Ideal in applications where the valve must be in OFF position at all times such as feeding fuel lines. Can be used in reverse with 90° reverse stem option. Basic configuration: spring return to CLOSED. All lever components are stainless steel.

- Spring return to OPEN optional
- Torque nearly three times that of standard valves



Model Number	Size Size (In.)	Dimensions (In.)			
		A	B	C	D
71-501-01	1/4	0.43	1.12	2.25	7.00
71-502-01	3/8	0.50	1.12	2.25	7.00
71-503-01	1/2	0.50	1.12	2.25	7.00
71-504-01	3/4	0.68	1.50	3.00	7.00
71-505-01	1	0.87	1.68	3.37	7.00
71-506-01	1-1/4	1.00	2.00	4.00	9.00
71-507-01	1-1/2	1.25	2.18	4.37	9.00
71-508-01	2	1.50	2.34	4.68	9.00

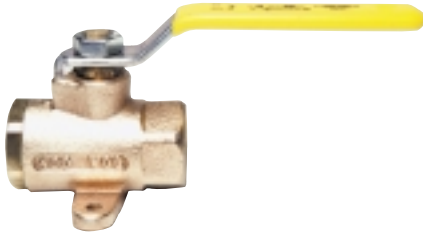


78-256-01

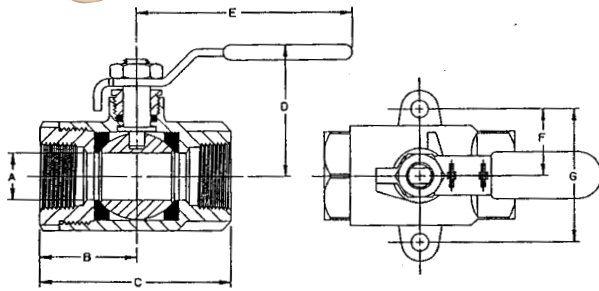
Fuel Shut-Off Valve With Mounting Ears

Excellent for use with liquid fuels and often specified as a fuel tank shut-off valve in marine applications. All wetted parts are brass or cast bronze. Features include mounting ears for easy, positive installation; 400 psig service rating tested to 100 psig air under water. Optional tee handle saves space and still provides fast 90° on/off.

- NPT threaded, both ends
- RPTFE seats and seals



Model Number	Size (In.)*	Dimensions (In.)						
		A	B	C	D	E	F	G
78-248-01	1/4	0.43	1.12	2.25	1.78	3.87	0.93	1.87
78-250-01	3/8	0.43	1.12	2.25	1.78	3.87	0.93	1.87
78-256-01	1/2	0.50	1.12	2.25	1.78	3.87	0.93	1.87
78-438-01	3/4	0.68	1.50	3.00	2.12	4.87	1.06	2.12



Gas Cock Ball Valves

GB-10 Series

CSA Gas Shutoff Valves

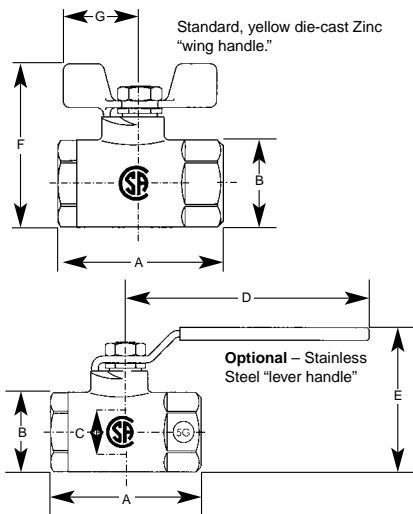
Manual shut-off valves engineered specifically for low-pressure gas service. **Canadian Standard Association Design** and capacity certified with American-made quality. High-copper content body, chrome-plated ball, PTFE seats. Rated for temperatures from 32°F to 125°F at pressures of 1/2 and 5 PSIG.



- Complies with CSA 3.88, ANSI Z21.15 and CR91-002
- Lever or tee handle options available
- Use with natural, manufactured, mixed and liquefied petroleum gases, LP gas-air mixtures
- Standard die-cast zinc "wing" handle, epoxy coated, for easy shut off

Model Number	Size (In.)	Connection	BTU/Hr*
51GB201	3/8	3/8 NPT	318,700
51GB301	1/2	1/2 NPT	623,750
51GB401	3/4	3/4 NPT	1,265,000
51GB501	1	1 NPT	2,037,500

* Capacity based on a gas having a heating value of 1000 Btu/cubic feet and an S.G. of 0.64 at a P.D. of 1" W.C.



Size (In.)	Dimensions (In.)						
	A	B	C	D	E	F	G
3/8	2.04	1.06	0.38	3.85	2.24	2.20	0.81
1/2	2.24	1.18	0.50	3.85	2.30	2.24	0.81
3/4	2.97	1.55	0.69	4.75	2.85	2.90	1.00
1	3.33	1.81	0.88	4.75	3.10	3.15	1.00



**GB-12, GB-13,
GB-14, GB-15,
GB-16 Series**

Gas Appliance Ball Valves

These gas appliance ball valves are designed for natural gas, manufactured and mixed gas, liquefied petroleum gases and LP gas-air mixture applications. They comply with the latest editions of these published standards:

- ANSI Z21.15,CGA9.1
- CSA No. 3-88
- UL Guide YRBX
- UL Guide MHKZ
- UL Guide YRPV
- UL Guide YSDT



GB-12



GB-13



GB-14

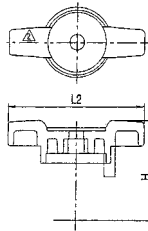
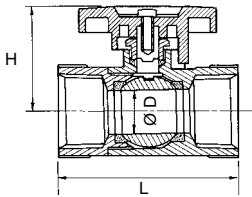
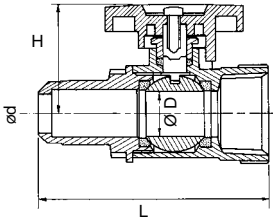
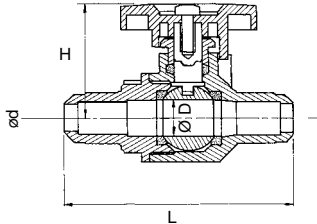
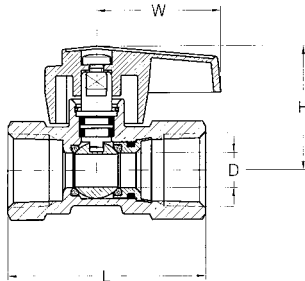
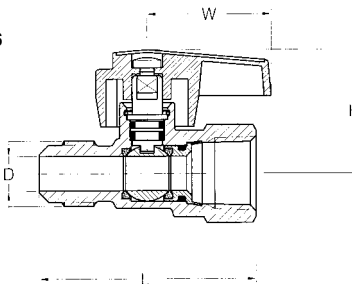


GB-15



GB-16

Model Number	Part Number	Size & End Connection (In.)
GB-12	51GC2T1	3/8 FNPT x FNPT
GB-12	51GC3T1	1/2 FNPT x FNPT
GB-12	51GC4T1	3/4 FNPT x FNPT
GB-12	51GC5T1	1 FNPT x FNPT
GB-13	51GD2T1	1/2 x 3/8 FNPT x Flare
GB-13	51GD3T1	1/2 x 1/2 FNPT x Flare
GB-13	51GD4T1	3/4 x 5/8 FNPT x Flare
GB-14	51GE2T1	3/8 x 3/8 Flare x Flare
GB-14	51GE3T1	1/2 x 1/2 Flare x Flare
UNIBODY SERIES		
GB-15	51GF201	3/8 FNPT x 3/8 FNPT
GB-15	51GF301	1/2 FNPT x 1/2 FNPT
GB-15	51GF401	3/4 FNPT x 3/4 FNPT
GB-16	51GG201	1/2 FNPT x 3/8 Flare
GB-16	51GG301	1/2 FNPT x 1/2 Flare


GB-12

GB-13

GB-14

GB-15

GB-16


		Dimensions (In.)				
Size (In.)	End Connection	L	L2	H	D	d
GB-12						
3/8	FNPT x FNPT	1.81	1.77	1.29	0.39	n/a
1/2	FNPT x FNPT	2.16	1.77	1.29	0.39	n/a
3/4	FNPT x FNPT	2.44	1.77	1.41	0.59	n/a
1	FNPT x FNPT	2.87	2.75	1.57	0.78	n/a
GB-13						
1/2 x 3/8	FNPT x Flare	2.44	1.77	1.29	0.39	0.27
1/2 x 1/2	FNPT x Flare	2.51	1.77	1.29	0.39	0.39
3/4 x 5/8	FNPT x Flare	3.03	1.77	1.41	0.59	0.50
GB-14						
3/8	Flare x Flare	2.51	1.77	1.29	0.39	0.27
1/2	Flare x Flare	2.63	1.77	1.29	0.39	0.39
UNIBODY						
Size	End Connection	L	H	D	W	
GB-15						
3/8	FNPT x FNPT	1.95	1.35	0.31	1.42	
1/2	FNPT x FNPT	2.28	1.40	0.39	1.42	
3/4	FNPT x FNPT	2.58	1.51	0.50	1.42	
GB-16						
1/2 x 3/8	FNPT x Flare	2.48	1.40	0.39	1.42	
1/2 x 1/2	FNPT x Flare	2.48	1.40	0.39	1.42	



GB-50 & GB-50A Series



GB-50

CSA Gas Shutoff Ball Valves

Designed for indoor “main burner” applications, with cast-in single or dual pilot tap for faster, simpler installation. Fully complies with CSA 3-88, ANSI Z21.15, CGA9.1, single or dual and CR91-002 standards. ASTM B584 bronze body, chrome-plated ball, brass stem, retainer and gland screws for corrosion resistance.

- For natural gas, manufactured and mixed gas, liquefied petroleum gases and LP gas-air mixtures
- Rated pressures of 1/2 and 5 psig
- High capacity
- Comes standard with a reversible plated steel lever handle. Options include a die-cast zinc “wing” handle and “tee” handle
- Standard connection is FNPT x FNPT

UL Certifications

ANSI Z21.15, CGA9.1
CSA 3.88
CR91-002

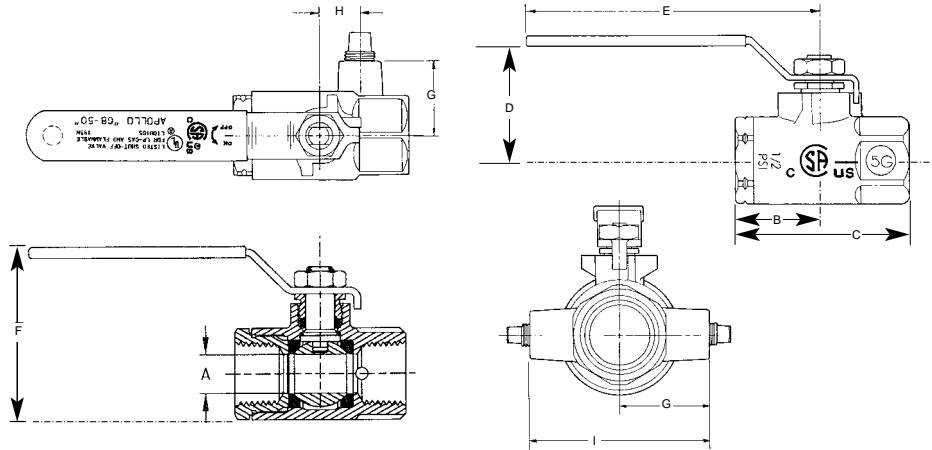
UL Guide YSDT
UL Guide YRPV
UL Guide YRBX
UL Guide MKHZ

Number Single Tapped	Dual Tapped	Size (In.)	Tapping	Dimensions(In.)									Capacity BTU/Hr.
				A	B	C	D	E	F	G	H	I	
50GB301	--	1/2	1/8	0.50	1.11	2.25	1.68	3.85	2.27	1.00	0.53	-	693000
50GB401	50GB401A	3/4	1/8	0.75	1.26	2.67	1.93	3.85	2.72	1.12	0.75	2.24	1258000
50GB501	50GB501A	1	1/8	1.00	1.65	3.42	2.19	4.78	3.18	1.53	0.94	3.06	3144000
50GB601	50GB601A	1-1/4	1/8	1.25	1.87	3.86	2.37	4.78	3.56	1.62	1.15	3.24	6441000
50GB701	50GB701A	1-1/2	1/8	1.50	2.05	4.22	2.81	5.40	4.21	1.81	1.31	3.62	7745000
50GB801	50GB801A	2	1/8	2.00	2.48	5.02	3.18	5.40	4.93	2.18	1.68	4.36	14741000
50GB5A1	50GB5A1A	1	1/4	1.00	1.65	3.42	2.19	4.78	3.18	1.53	0.94	3.06	3144000
50GB6A1	50GB6A1A	1-1/4	1/4	1.25	1.87	3.86	2.37	4.78	3.56	1.62	1.15	3.24	6441000
50GB7A1	50GB7A1A	1-1/2	1/4	1.50	2.05	4.22	2.81	5.40	4.21	1.81	1.31	3.62	7745000
50GB8A1	50GB8A1A	2	1/4	2.00	2.48	5.02	3.18	5.40	4.93	2.18	1.68	4.36	14741000

*Note: Capacities based on 1000 Btu/cubic feet gas at 0.64 specific gravity, at a P.D. of 1" W.C.



GB-50A



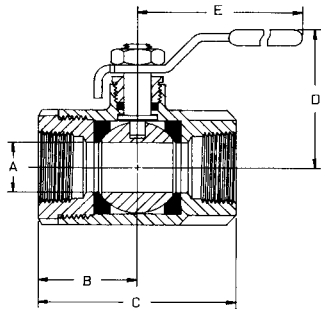
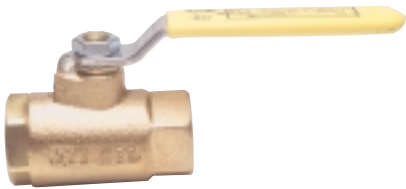


80-100-01

UL-Listed Gas Shut-Off Valve

UL-listed and designed as safe shut-off valve for LP gas, natural gas, flammable liquids and heated oil. Optional unplated ball model meets code requirements. Features easy quarter-turn ON/OFF, a large port to reduce pressure drop and NPT connections.

- RPTFE seats and seals



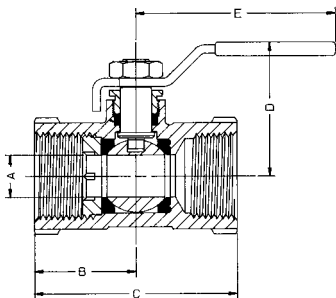
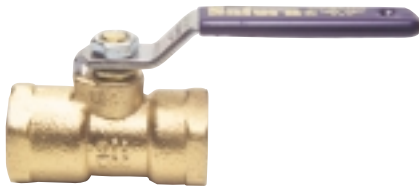
Model Number	Size (In.)	Dimensions (In.)				
		A	B	C	D	E
80-101-01	1/4	0.37	1.03	2.06	1.75	3.87
80-102-01	3/8	0.37	1.03	2.06	1.75	3.87
80-103-01	1/2	0.50	1.12	2.25	1.81	3.87
80-104-01	3/4	0.68	1.50	3.00	2.12	4.87
80-105-01	1	0.87	1.68	3.37	2.25	4.87
80-106-01	1-1/4	1.00	2.00	4.00	2.62	5.50
80-107-01	1-1/2	1.25	2.18	4.37	2.87	5.50
80-108-01	2	1.50	2.34	4.68	3.06	5.50
80-109-01	2-1/2	2.50	3.25	6.50	4.12	8.00
80-100-01	3	2.50	3.37	6.75	4.12	8.00

90-100-01

UL-Listed Uni-Body Threaded Ball Valve

A compact valve that's UL listed at 300 psig for fuel, inert gases and flammable liquids. Features chromium-plated ball, RPTFE seats and seals.

- Blowout-proof stem design
- One-piece bronze body
- Optional tee handle



Model Number	Size (In.)	Dimensions (In.)				
		A	B	C	D	E
90-103-01	1/2	0.37	1.14	2.15	1.68	3.87
90-104-01	3/4	0.50	1.36	2.61	1.75	3.87
90-105-01	1	0.62	1.50	2.90	2.00	4.87
90-106-01	1-1/4	0.81	1.81	3.50	2.18	4.87
90-107-01	1-1/2	1.00	2.06	3.79	2.62	5.50
90-108-01	2	1.25	2.43	4.42	2.81	5.50

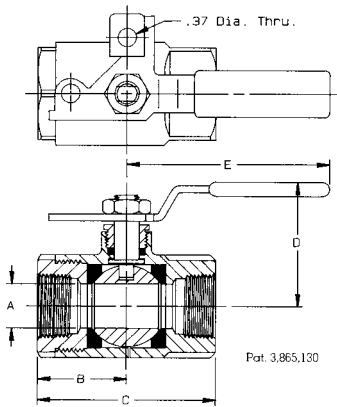
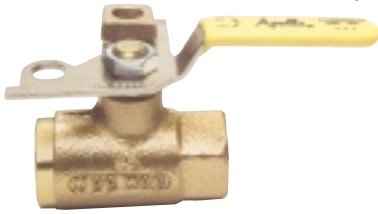
Padlocking Valves

75-100-41

Padlocking Ball Valve With Automatic Drain

Meets OSHA standards and provides for easy, safe maintenance of pneumatic tools. Valve can be padlocked OPEN or CLOSED with same hardware. Built with RPTFE seats and stuffing box ring, a blowout-proof stem design, adjustable packing gland and chromium-plated ball. (Also available without drain option. Specify suffix -01).

- Threaded end connections
- Rated to 200 psig – air or water
- Temperature range: +50°F to 200°F



Model Number	Size (In.)	Dimensions (In.)				
		A	B	C	D	E
75-101-41	1/4	0.43	1.12	2.25	1.81	3.00
75-102-41	3/8	0.50	1.12	2.25	1.81	3.00
75-103-41	1/2	0.50	1.12	2.25	1.81	3.00
75-104-41	3/4	0.87	1.68	3.37	2.25	3.87
75-105-41	1	0.87	1.68	3.37	2.25	3.87
75-106-41	1-1/4	1.00	2.00	4.00	2.62	5.50
75-107-41	1-1/2	1.25	2.16	4.37	2.87	5.50
75-108-41	2	1.50	2.34	4.68	3.06	5.50

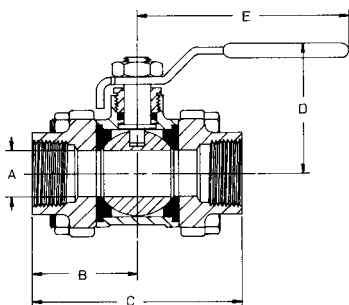
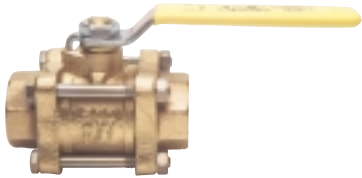
3-Piece Full-Port Valves

82-100-01

Full-Port 3-Piece Valve

This in-line repairable threaded ball valve offers RPTFE seats and seals and a 600 WOG rating. SAE Grade 8 body bolts standard.

- Rated 150 psig saturated steam
- Static grounding devices optional



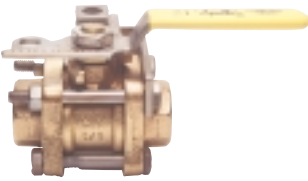
Model Number	Size (In.)	Dimensions (In.)				
		A	B	C	D	E
82-101-01	1/4	0.43	1.28	2.56	1.81	3.87
82-102-01	3/8	0.50	1.28	2.56	1.81	3.87
82-103-01	1/2	0.62	1.40	2.81	1.93	4.87
82-104-01	3/4	0.81	1.71	3.43	2.18	4.87
82-105-01	1	1.00	1.93	3.87	2.62	5.50
82-106-01	1-1/4	1.25	2.37	4.75	2.87	5.50
82-107-01	1-1/2	1.50	2.62	5.25	3.37	8.00
82-108-01	2	2.00	3.01	6.03	3.68	8.00
82-109-01	2-1/2	2.50	3.62	7.25	5.14	9.75
82-140-01	3	3.00	4.00	8.00	6.77	18.00
82-14A-01	4	4.00	5.50	11.00	8.26	18.00



82-100-19

Full-Port 3-Piece Valve With Locking Plate

Threaded valve features a 3-piece design that makes in-line repairs easy. Meets OSHA lock-out standards. It's equipped with RPTFE seats. Two bolts are steel, two are stainless steel. (Option -19 not available on 2-1/2" size).

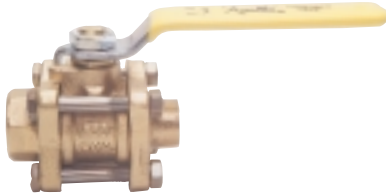


- Rated 150 psig for saturated steam
- 600 psig WOG cold, non-shock

82-100-63

Full-Port 3-Piece Valve With NPT x Solder Ends

Built to make in-line repairs fast and simple, this valve features RPTFE seats and seals and a 600 WOG rating. It's equipped with SAE Grade 8 body bolts.

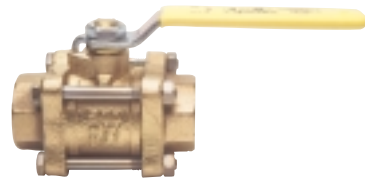


- Full port flow advantages
- Adjustable packing gland

82-140-57

Full-Port 3-Piece Valve With 316 Stainless Steel Ball/Stem

Cleaned for gaseous oxygen, valve is equipped with NPT connections and features RPTFE seats and seals, blowout-proof stem design and adjustable packing gland.



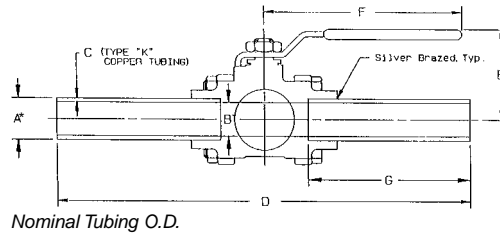
- Rated 600 psig cold, non-shock
- 150 psig for saturated steam

82-200/82-240

3-Piece Full-Port Valve With Brazed Tubing

Also available: with nominal 6" type K tubing brazed into the solder end cup – cleaned for oxygen service (option suffix -57). This valve is useful in pharmaceutical, medical gas and pneumatic applications where valves should not be disassembled prior to soldering or brazing.

Standard		Oxygen Cleaned		Dimensions (In.)							
Model Numbers	Model Numbers 316 Ball & Stem	Model Numbers	Model Numbers 316 Ball & Stem	Size (In.)	A*(In.)	B	C	D	E	F	G
82-203-B8	82-243-A8	82-203-A1	82-243-A7	1/2	5/8	0.62	0.05	13.81	2.00	4.87	6.00
82-204-A8	82-244-B3	82-204-A2	82-244-B2	3/4	0.87	0.81	0.07	13.93	2.18	4.87	6.00
82-205-B7	82-245-B1	82-205-A1	82-245-B0	1	1.12	1.00	0.07	14.04	2.62	5.50	6.00
82-206-B7	82-246-B0	82-206-A1	82-246-A9	1-1/4	1.37	1.25	0.07	14.81	2.87	5.50	6.00
82-207-B2	82-247-B2	82-207-A1	82-247-B0	1-1/2	1.62	1.50	0.07	15.07	3.37	8.00	6.00
82-208-B7	82-248-B2	82-208-A1	82-248-B1	2	2.12	2.00	0.08	15.23	3.70	8.00	6.00

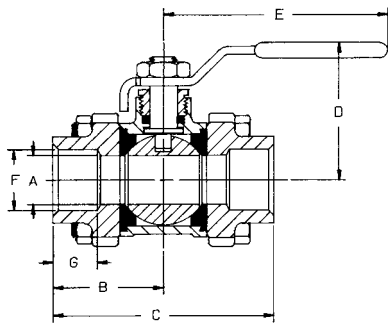
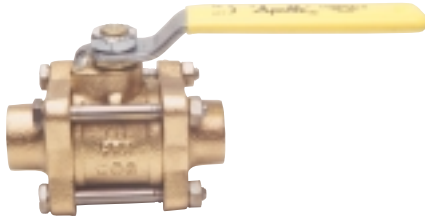


82-200-01

Full-Port 3-Piece Solder End Valve

Valve features full-port and is easily repaired in-line. Designed for soft soldering or brazed installation. Includes RPTFE seats and seals.

- Chromium-plated ball
- Equipped with SAE Grade 8 body bolts



Model Number	Size* (In.)	A	B	C	D	E	F	G
82-202-01	3/8	0.50	1.28	2.56	1.81	3.87	0.50	0.37
82-203-01	1/2	0.62	1.40	2.81	1.93	4.87	0.63	0.50
82-204-01	3/4	0.81	1.71	3.43	2.18	4.87	0.88	0.75
82-205-01	1	1.00	1.93	3.87	2.62	5.50	1.13	0.90
82-206-01	1-1/4	1.25	2.37	4.75	2.87	5.50	1.38	0.96
82-207-01	1-1/2	1.50	2.60	5.25	3.37	8.00	1.63	1.09
82-208-01	2	2.00	3.01	6.03	3.68	8.00	2.13	1.34
82-209-01	2-1/2	2.50	3.62	7.25	5.14	9.38	2.63	1.47
82-240-01	3	3.00	4.00	8.00	6.77	18.00	3.13	1.66
82-24A-01	4	4.00	5.50	11.00	8.26	18.00	4.13	2.16



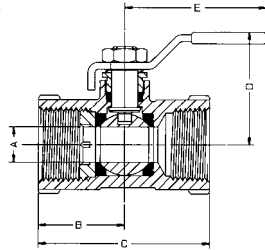
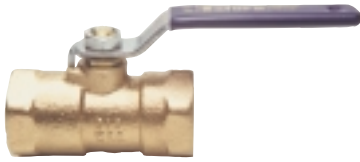
General Purpose Uni-body Valves

9A-100-01

Heavy Pattern Uni-Body Threaded Ball Valve

One-piece bronze valve eliminates leak paths. Features static grounding devices and adjustable packing gland. Lever handle standard.

- Rated 600 psig WOG
- Blowout-proof stem design



Model Number	Size (In.)	Dimensions (In.)				
		A	B	C	D	E
9A-101-01	1/4	0.37	1.34	2.59	1.68	3.87
9A-102-01	3/8	0.37	1.34	2.59	1.68	3.87
9A-103-01	1/2	0.37	1.34	2.59	1.81	3.87
9A-104-01	3/4	0.50	1.44	2.84	1.84	3.87
9A-105-01	1	0.62	1.72	3.28	2.00	4.87
9A-106-01	1-1/4	0.81	1.94	3.84	2.18	4.87
9A-107-01	1-1/2	1.00	2.06	4.00	2.68	5.50
9A-108-01	2	1.25	2.29	4.56	2.87	5.50

91-100-01

Threaded Uni-Body Ball Valve

A compact valve featuring a chromium-plated ball, adjustable packing gland, blowout-proof stem design and RPTFE seats and seals. Lever handle standard, tee handle optional.

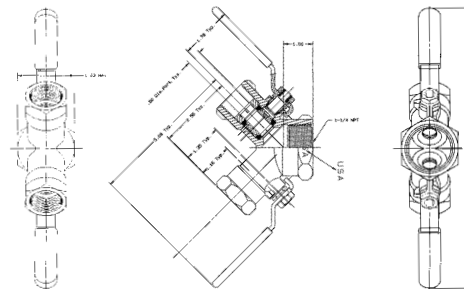
- 400 psig WOG cold non-shock
- 150 psig saturated steam

Model Number	Size (In.)	Dimensions (In.)				
		A	B	C	D	E
91-101-01	1/4	0.37	1.14	2.15	1.68	3.87
91-102-01	3/8	0.37	1.14	2.15	1.68	3.87
91-103-01	1/2	0.37	1.14	2.15	1.68	3.87
91-104-01	3/4	0.50	1.36	2.61	1.75	3.87
91-105-01	1	0.62	1.50	2.90	2.00	4.87
91-106-01	1-1/4	0.81	1.81	3.50	2.18	4.87
91-107-01	1-1/2	1.00	2.06	3.79	2.62	5.50
91-108-01	2	1.25	2.43	4.42	2.81	5.50

Specialty Valves

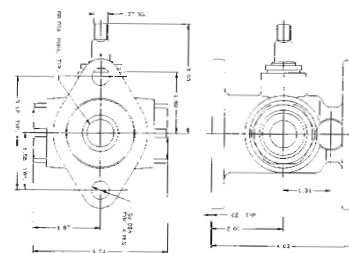
Dual Wye Auto Drain Ball Valve

Dual action modular valve, ideal for compressor applications where safety exhaust may be needed for two air lines at once.



3-Way, 4-Seated Ball Valve with Flanged Pump Connections

This special valve can be used in hydronic geothermal or other HVAC applications where diversion of flow is required, along with positive shut off. Designed to connect directly to circulator pump flange connections.



Valves For Water Service

IBV-125 Series



Apollo® International Cast Iron Full-Port Class 125 Flanged Ball Valves

The Conbraco IBV-125 Series cast iron ball valve meets MSS SP-72, ANSI B16.10 and federal WW-V-35 performance standards. They can be used to replace any IBBM gate valve or plug valve. With their full port design, these valves assure an unobstructed, turbulence-free flow that gate and butterfly valves can't match. Low profile handle for easy installation in tight areas. Sizes from 2" to 10". Rated 125 WSP, 200 WOG, with a maximum operating temperature of 350°F.

- Gear operator standard 8" and 10"
- Full-port design offers superior flow rate
- No bronze seat rings, disc rings or stems to wear out
- Quarter-turn offers instant, positive shutoff with zero leakage
- Stainless steel ball resists corrosion
- Handle indicates valve operation status
- Large actuator mounting pad standard
- Optional locking handles available
- Blowout-proof stainless steel stem
- PTFE seats and packing, not Nitrile or EPDM
- Opens and closes easily, without cheater bar
- For more technical information, request #PHBRIRBV brochure

IBVE-125 Series

Apollo International Epoxy Coated Cast Iron Full Port Class 125 Flanged Ball Valve

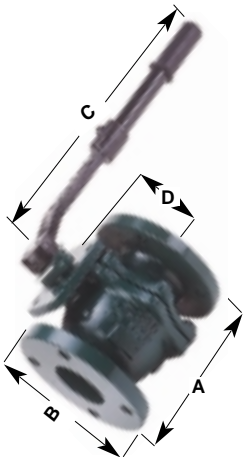
IBVE-125 Series valves have all the design and construction features of the IBV-125 plus an FDA-approved, heat-fused epoxy coating making them ideal for corrosive water service as well as food contact applications. Maximum operating temperature: 140°F.

- For additional technical information, request #PHBRIRBV brochure

IBVD-125 Series

Apollo International Ductile Iron Full Port Class 125 Flanged Ball Valve

IBVD-125 series valves have the same design and construction features of the IBV-125 series but in ductile iron. Same dimensional data as IBV/IBVE series. Available in sizes 2" through 6".



IBV Model Number	IBVE Model Number	IBVD Model Number	Size (In.)	Dimensions (In.)				Wt./100 (Lbs.)
				A	B	C	D	
6P-208-01	6Q-208-01	6R-208-01	2	7.00	6.00	9.00	3.00	22.0
6P-209-01	6Q-209-01	6R-209-01	2-1/2	7.50	7.00	16.00	3.70	34.0
6P-200-01	6Q-200-01	6R-200-01	3	8.00	7.50	16.00	4.00	38.0
6P-20A-01	6Q-20A-01	6R-20A-01	4	9.00	9.00	19.70	4.80	58.0
6P-20C-01	6Q-20C-01	6R-20C-01	6	10.50	11.00	26.00	7.20	118.0
6P-20E-01	6Q-20E-01	-	8*	11.50	13.50	-	9.24	345.0
6P-20G-01	-	-	10*	13.00	16.00	-	11.81	440.0

* with manual gear operator



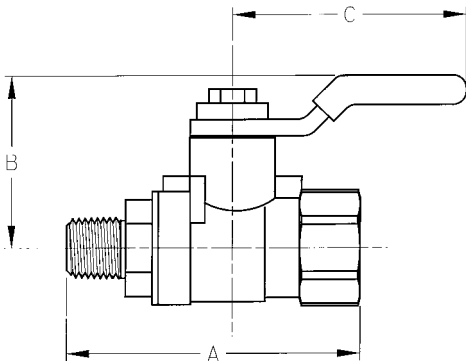
94 MBV

Mini Ball Valve

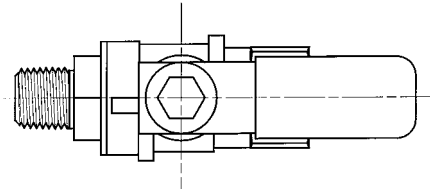
The Mini Ball Valve is designed for steam, water, oil or gas in commercial and light industrial use. The mini-valves are a competitive, conventional port, constructed of heavy-duty forged brass, 100% Teflon® seats and gland follower with double viton o-rings, to prevent stem leakage. The valves are equipped with a reversible handle for tight space applications. The valves are manufactured in accordance with ANSI B1.20.1. The valves are pressure rated to a maximum of 600 psig at 100°F. Rated service temperature ranges are from -40°F to 300°F.



- Reversible Handle
- Rugged Forged Construction
- Greater Flow Rate
- Blow Out Proof Stem
- Double Viton O-rings
- Large Raised Wrench Flats
- Chrome Plated Brass Ball
- Each Mini is Air-Tested Twice: In the Open and Closed Position
- Use as a Non-leak Gauge Cock/Test Cock
- Perfect for O.E.M. Applications



Model Number	Size (In.)	Dimensions (In.)			Internal	
		A	B	C	Ø	Wt. (Lbs.)
94MBV01	1/4 FNPT x 1/8 MNPT	1.96	1.25	1.67	0.31	0.19
94MBV02	1/4 FNPT x 1/4 MNPT	2.04	1.15	1.67	0.31	0.20
94MBV03	1/4 FNPT x 1/4 FNPT	1.63	1.28	1.67	0.31	0.17
94MBV04	1/8 FNPT x 1/8 MNPT	1.97	1.20	1.67	0.31	0.16
94MBV05	1/8 FNPT x 1/8 FNPT	1.61	1.23	1.67	0.31	0.16



Economy Valves

64 Series



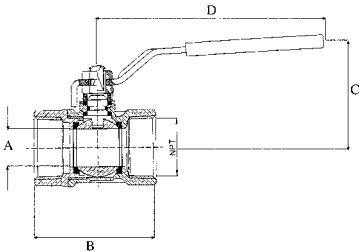
Apollo® International Full Port Brass Ball Valves

Economy full-port forged ball valve with maximum flow; ideal choice for all plumbing applications. Lever handle is standard on all sizes.

- Sizes from 1/4" to 4"
- Threaded (-100) and solder end (-200) connections
- Pressure rated to 600 psig WOG; 150 psig steam
- Temperatures to 366°F (185°C)
- Blowout-proof stem
- Chrome-plated brass ball
- Secondary O-ring stem seal
- PTFE seats, thrust bearing and stem packing

64-100		Dimensions (In.)				
Model Number	Size (In.)	A	B	C	D	Cv
64-101-01	1/4 NPT	0.39	2.02	1.75	3.85	6
64-102-01	3/8 NPT	0.39	2.02	1.75	3.85	7
64-103-01	1/2 NPT	0.59	2.44	1.88	3.85	19
64-104-01	3/4 NPT	0.78	2.71	2.28	4.80	34
64-105-01	1 NPT	0.98	3.07	2.44	4.80	50
64-106-01	1-1/4 NPT	1.25	3.42	3.07	6.02	104
64-107-01	1-1/2 NPT	1.57	3.89	3.34	6.02	268
64-108-01	2 NPT	1.96	4.33	3.79	6.37	309
64-109-01	2-1/2 NPT	2.56	5.59	5.02	8.07	629
64-100-01	3 NPT	3.15	6.45	5.45	8.07	1018
64-10A-01	4 NPT	3.94	7.60	6.34	10.23	1622

64-200		Dimensions (In.)				
Model Number	Size (In.)	A	B	C	D	Cv"
64-203-01	1/2	0.59	2.53	1.88	3.85	19
64-204-01	3/4	0.78	2.99	2.28	4.80	34
64-205-01	1	0.98	3.58	2.44	4.80	50
64-206-01	1-1/4	1.25	4.09	3.07	6.02	104
64-207-01	1-1/2	1.57	4.56	3.34	6.02	268
64-208-01	2	1.96	5.43	3.79	6.37	309
64-209-01	2-1/2	2.56	6.93	5.02	8.07	629
64-200-01	3	3.15	8.09	5.45	8.07	1018
64-20A-01	4	4.13	10.25	6.34	10.23	1622



Optional Kits Valve Size (In.)	Stem Extensions	Balancing Stops	Locking Handles	Lever Handles
1/4, 3/8 and 1/2	78-1501-01	78-1506-01	78-1659-01	78-1646-01*
3/4 and 1	78-1502-01	78-1507-01	78-1660-01	78-1647-01
1-1/4 and 1-1/2	78-1503-01	78-1508-01	78-1661-01	78-1648-01
2	78-1504-01	78-1509-01	78-1662-01	78-1649-01
2-1/2 and 3	78-1505-01	78-1510-01	-	78-1650-01
4	-	-	-	78-1651-01

Note: Specify -07 suffix for "T" handle, ie. 64-105-07. Available with threaded models only in 1/4"-1" sizes.
* Lever handle available on 1/2" - 4".

95A Series

Apollo International Full Port Brass Ball Valve With Stop & Waste



Threaded	Sweat	Size (In.)
95A-303-01	95A-403-01	1/2
95A-304-01	95A-404-01	3/4
95A-305-01	95A-405-01	1